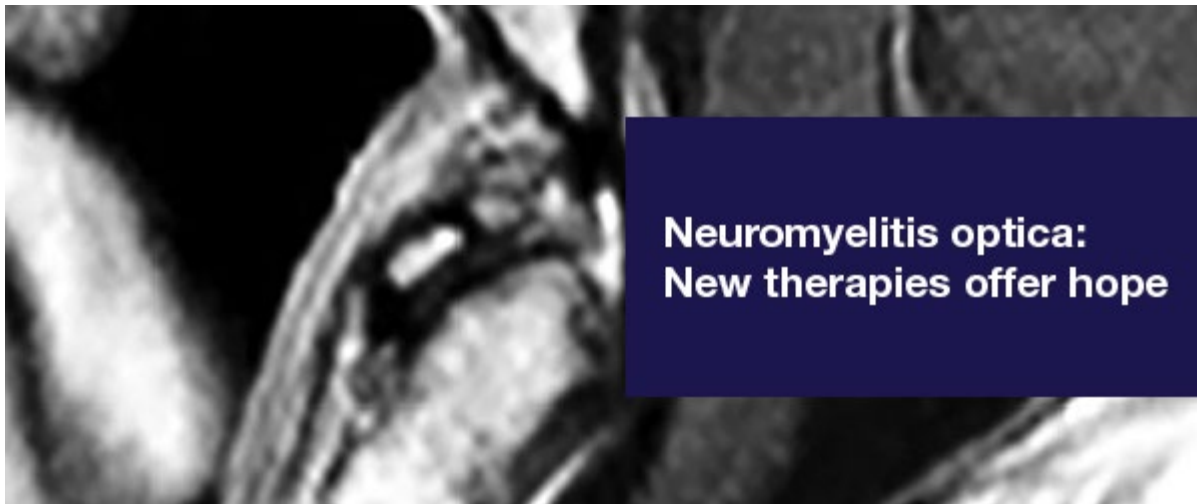


September 2021



Patient Care

[Eye tumor care starts with imaging](#)

Pediatric neuroradiologists are key members of Mayo Clinic's retinoblastoma team. Multidisciplinary specialists work to protect the lives, eyes and sight of children with this rare cancer.

[Patient-specific models guide spinal surgery](#)

Mayo Clinic's point-of-care additive manufacturing facility provides 3D-printed anatomic models of complex spinal deformities. The life-sized models and surgical guides are valuable preoperative and intraoperative tools for the treatment of congenital adult scoliosis.

[Easily make referrals to Mayo Clinic or access your patients' medical records](#)

Enroll in Mayo Clinic CareLink referring physician portal to make a referral and access your patients' medical records 24/7. CareLink may be accessed on desktop and tablet browsers.

[See more Neurology and Neurosurgery news](#)

[View Neurology and Neurosurgery specialty videos and Grand Rounds presentations](#)



Research

[Research yields new NMOSD therapies](#)

Three recently approved medications provide options for patients with neuromyelitis optica spectrum disorder (NMOSD), a rare inflammatory disorder. Mayo Clinic's expertise and pioneering role in NMOSD research can help patients choose the optimal treatment.

See all [Neurology](#) and [Neurosurgery](#) Clinical Trials at Mayo Clinic



Education

Mayo Clinic School of Continuous Professional Development offers [live courses](#), [livestreaming courses](#), [online continuing medical education \(CME\) courses](#) and [podcasts](#) to meet your CME needs.

Medical education from Mayo Clinic experts is also available through [GIBLIB](#), a new on-demand medical education library. GIBLIB provides a free seven-day trial and a 25% discount on premium annual subscriptions including unlimited CME for Mayo Clinic learners. Simply enter code **MAYOCPD2021** to access this offer.

[5th Annual Multidisciplinary Spine Care Conference 2021](#)

Nov. 12-13, 2021, in Amelia Island, Fla., and livestream

This course focuses on the management of diverse spinal disorders as well as technological advancements, controversial spinal topics, complications and socioeconomic issues. The course includes reviews of case-based and evidence-based guidelines.

COVID-19 Updates

Find [resources for providers](#) and answers to questions on [referrals and testing](#) on the Medical Professionals Resource Center.

Consults and Referrals

[Phoenix/Scottsdale, Arizona](#)
844-464-0050

Admission and Transfer Center (ATC) line for urgent/emergent referrals
480-342-1155

[Jacksonville, Florida](#)
844-275-1062

Admission and Transfer Center (ATC) line for urgent/emergent referrals
904-717-0206

[Rochester, Minnesota](#)
844-384-4982

Admission and Transfer Center (ATC) line for urgent/emergent referrals
507-255-2910

[Neurology](#)
507-405-0786

[Neurosurgery](#)
507-405-0873

[Online Referrals](#)

Resources

[Careers: All Physician Specialties](#)

[Clinical Trials](#)

[Mayo Clinic School of Continuous Professional Development](#)

Connect With Us



Comments?

We're interested in your feedback about this newsletter.

Pass It On!

Invite a friend to subscribe.

Mayo Clinic

13400 E. Shea Blvd.
Scottsdale, AZ 85259

4500 San Pablo Road
Jacksonville, FL 32224

200 First St. SW
Rochester, MN 55905



[MayoClinic.org](#) | [Newsletter Archive](#) | [Contact](#) | [Medical Professionals](#)