



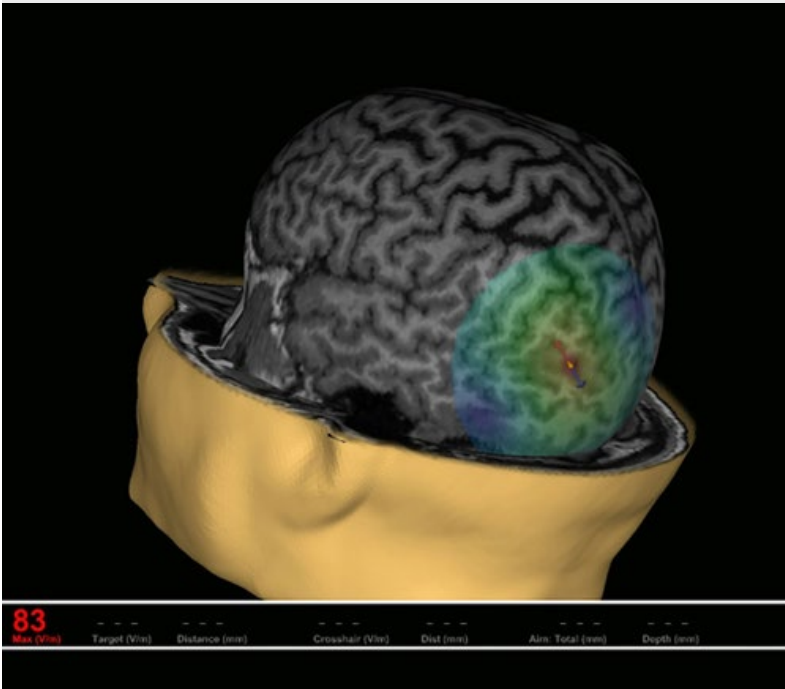
# Neurosciences Physician Update

November 2021



**Moyamoya: New protocol for managing a complex disease**

Patient Care



## Transcranial magnetic stimulation successfully treats an individual's debilitating epilepsy

The patient, who experienced 200 seizures a day, was the first at Mayo Clinic to have the noninvasive therapy as a treatment for epilepsy.

[Learn more](#)



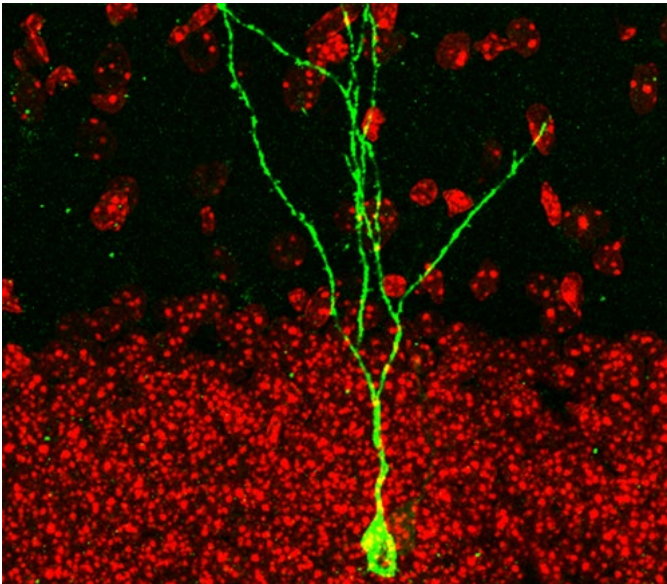
## Easily make referrals to Mayo Clinic or access your patients' medical records

Enroll in Mayo Clinic CareLink referring physician portal to make a referral and access your patients' medical records 24/7. CareLink may be accessed on desktop and tablet browsers

[Enroll now](#)

[See more Neurology and Neurosurgery news](#)

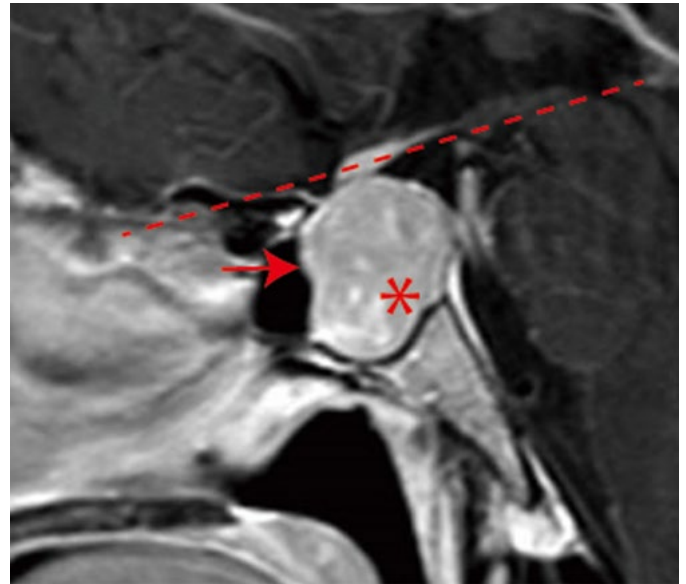
[View Neurology and Neurosurgery specialty videos and Grand Rounds presentations](#)



### Mayo Clinic laboratory research sheds light on chemo brain's underlying pathology

Mice pre-treated with nicotinamide mononucleotide before cisplatin therapy performed better on subsequent learning and memory tests than did mice that weren't pre-treated.

[Learn more](#)



### Rare pituitary cancer has clinically aggressive features

A Mayo Clinic study describes the challenges of diagnosis and treatment of individuals with spindle cell oncocytoma. Classified as a grade 1 tumor, the neoplasm nevertheless can progress rapidly.

[Learn more](#)

See all [Neurology](#) and [Neurosurgery](#) Clinical Trials at Mayo Clinic

## Education

Mayo Clinic School of Continuous Professional Development offers [live courses](#), [livestreaming courses](#), [online continuing medical education \(CME\) courses](#) and [podcasts](#) to meet your CME needs. Medical education from Mayo Clinic experts is also available through [GIBLIB](#), a new on-demand medical education library.

See all [Neurology](#) and [Neurologic Surgery](#) Continuing Medical Education courses



## **Mayo Clinic Advancements in Surgical & Medical Management of the Spine 2022**

Feb. 19-23, 2022

Kohala Coast, Hawaii

This course addresses the spectrum of spinal disease, including misalignments, common degenerative conditions and disease secondary to trauma. The curriculum covers both surgical spinal management and nonoperative approaches.

**Register Now**

## **Electromyography (EMG), Electroencephalography (EEG) & Neurophysiology in Clinical Practice — 2022**

Feb. 19-24, 2022

Phoenix

This course reviews techniques and topics of neurophysiology, including basic physiology, pathophysiology, electroencephalography, evoked potentials, electromyography, movement disorders and intraoperative monitoring.

**Register Now**

## **COVID-19 updates & resources**

[Read more](#)

## **Consults and Referrals**

Phoenix/Scottsdale, Arizona

844-464-0050

Admission and Transfer Center (ATC) line for urgent/emergent referrals  
480-342-1155

**Jacksonville, Florida**

844-275-1062

Admission and Transfer Center (ATC) line for urgent/emergent referrals  
904-717-0206

**Rochester, Minnesota**

844-384-4982

Admission and Transfer Center (ATC) line for urgent/emergent referrals  
507-255-2910

**Neurology**

507-405-0786

**Neurosurgery**

507-405-0873

**Online Referrals**

## Resources

[Life-Changing Careers: Physicians & Scientists](#)

[Clinical Trials](#)

[Mayo Clinic School of Continuous Professional Development](#)



**Comments?**

We're interested in your feedback about this newsletter.

**Pass It On!**

Invite a friend to subscribe.