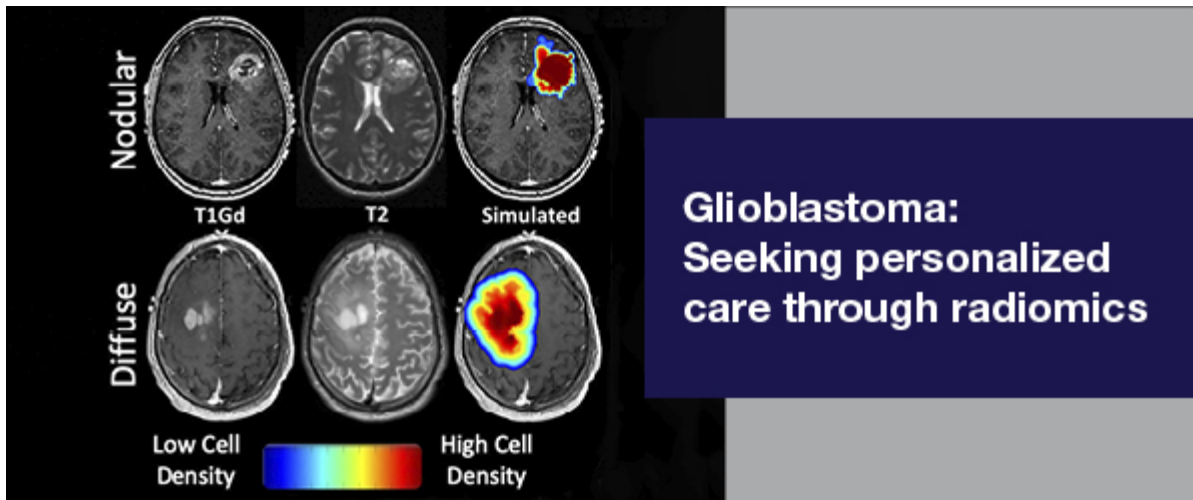


November 2020

## COVID-19 Updates

Find [resources for providers](#) and answers to questions on [referrals](#) and [testing](#) on the Medical Professionals Resource Center



## Patient Care

### [Neurological simulations advance learning](#)

Simulation of neurological disease is difficult. Mayo Clinic has advanced its simulation training capabilities and envisions a future where specific learning objectives are matched to simulation modality and are best achieved through a rich experience.



## Research

### [Insight into spinal cord mechanics helps guide approaches to cervical myelopathy](#)

Cervical myelopathy symptoms often recur after surgery. Mayo Clinic is learning more about the stress placed on the spinal cord during the procedure, to determine the best surgical approach.

## [Clinical trial to identify predictors for post-traumatic headache](#)

Nearly 40% of patients who develop acute post-traumatic headache experience persistent headaches. Researchers are conducting a study to identify mechanisms and predictors of persistent post-traumatic headache caused by mild traumatic brain injury.

See all [Neurology](#) and [Neurosurgery](#) Clinical Trials at Mayo Clinic



## Education

### [GIBLIB: Earn unlimited CME from Mayo Clinic subject matter experts](#)

Explore Neurology and Neurosurgery presentations on GIBLIB, including:

- [Left Occipital Stereotactic Craniotomy for Resection of Left Occipital Parasagittal Mass](#)
- [Mechanisms of Paraneoplastic Neurological Autoimmunity and Clinical Considerations in the Era of Checkpoint Inhibitors](#)

### [Mayo Clinic Talks Podcast](#)

Each month, Mayo Clinic specialists discuss a variety of topics helpful to medical professionals. Scroll to find Updates in the Evaluation and Treatment of Multiple Sclerosis.

### [Neurology in Clinical Practice Online CME Course](#)

Topics include development of appropriate treatment plans for cerebrovascular diseases, headache, dementia, movement disorders, epilepsy, multiple sclerosis and neuromuscular diseases; therapies for treatment of seizures; and treatment options for patients with spine diseases.

See all [Neurology](#) and [Neurologic Surgery](#) Continuous Professional Development courses



## In the Video Center

View [Neurology](#) and [Neurosurgery](#) specialty and Grand Rounds presentations

## Consults and Referrals

[Phoenix/Scottsdale, Arizona](#)  
844-464-0050 (toll-free)

Admission and Transfer Center (ATC) line for urgent/emergent referrals  
480-342-1155

[Jacksonville, Florida](#)  
844-275-1062 (toll-free)

Admission and Transfer Center (ATC) line for urgent/emergent referrals  
904-717-0206

[Rochester, Minnesota](#)  
844-384-4982 (toll-free)

Admission and Transfer Center (ATC) line for urgent/emergent referrals  
507-255-2910

[Neurology](#)  
507-405-0786

Neurosurgery  
507-405-0873

[Online Referrals](#)

## Resources

[Careers: All Physician Specialties](#)

[Clinical Trials](#)

[Mayo Clinic School of Continuous Professional Development](#)

## Connect With Us



### Comments?

We're interested in your feedback about this newsletter.

### Pass It On!

Invite a friend to subscribe.

### Mayo Clinic

13400 E. Shea Blvd.  
Scottsdale, AZ 85259

4500 San Pablo Road  
Jacksonville, FL 32224

200 First St. SW  
Rochester, MN 55905



[MayoClinic.org](#) | [Newsletter Archive](#) | [Contact](#) | [Medical Professionals](#)