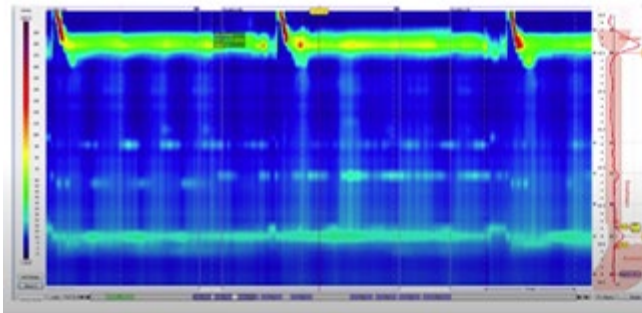


March 2021

COVID-19 Updates

Find [resources for providers](#) and [answers to questions on referrals and testing](#) on the Medical Professionals Resource Center



Esophageal dysfunction after bariatric surgery



Patient Care

[ASMBS guidelines recommend bariatric surgery for adolescents who are obese](#)

In Mayo Clinic's adolescent bariatric surgery program, adolescent patients with severe obesity receive education and support to facilitate lifestyle modifications before surgery and close follow-up after.

[BMI no longer a barrier for kidney transplant](#)

Amid increasing obesity in the U.S., Mayo Clinic has raised its maximum body mass index (BMI) for kidney transplant, using bariatric surgery pretransplant to widen availability.

Visit the [Medical Professional Video Center](#) to view specialty videos and Grand Rounds presentations



Research

[Prevalence of obesity increases in patients with IBD](#)

Prospective disease evaluation, improved control of confounding factors, and obesity measures that reflect visceral adipose tissue are needed to understand obesity's role in the pathogenesis and management of inflammatory bowel disease (IBD).

[Mayo Clinic Proceedings goes fully digital in 2021](#)

Mayo Clinic Proceedings' move to online-only access provides subscribers with access to new content and the ability to search content by specialty or subject area — plus connections to related multimedia.

See all [Family Medicine](#) and [General Internal Medicine](#) Clinical Trials at Mayo Clinic



Education

Mayo Clinic School of Continuous Professional Development offers [live courses](#), [livestreaming courses](#), [online continuing medical education \(CME\) courses](#) and [podcasts](#) to meet your CME needs.

Medical education from Mayo Clinic experts is also available through [GIBLIB](#), a new on-demand medical education library. GIBLIB provides a free 7-day trial and 25% discount on premium annual subscriptions including unlimited CME for Mayo Clinic learners. Simply enter code **MAYOCPD2021** to access this offer.

[2021 Men's Health Update: Engagement, Prevention and Performance — LIVESTREAM](#)

May 8, 2021

This course highlights medical conditions that may cause varying symptoms affecting men differently than women, thus requiring special treatment or prevention protocols.

[Transforming Women's Health 2021 — LIVESTREAM](#)

June 10-12, 2021

This course presents emerging scientific and clinical evidence related to medical conditions that are unique to women, occur more frequently in women or present differently in women.

Consults and Referrals

[Phoenix/Scottsdale, Arizona](#)

844-255-4442

[Jacksonville, Florida](#)

855-691-1265

[Rochester, Minnesota](#)

888-380-4055

[Online Referrals](#)

Resources

[Careers: All Physician Specialties](#)

[Clinical Trials](#)

[Mayo Clinic School of Continuous Professional Development](#)

Connect With Us



Comments?

We're interested in your feedback about this newsletter.

Pass It On!

Invite a friend to subscribe.

Mayo Clinic

13400 E. Shea Blvd.
Scottsdale, AZ 85259

4500 San Pablo Road
Jacksonville, FL 32224

200 First St. SW
Rochester, MN 55905



MayoClinic.org | [Newsletter Archive](#) | [Contact](#) | [Medical Professionals](#)