



Pulmonology Physician Update

May 2026

Patient Care



[NIV: Optimizing transitions of care](#)

While the benefits of noninvasive ventilation are well established, the transition from hospital to home remains a vulnerable juncture. A recently published review combines existing literature and expert perspectives on how to optimize transitions of care.

[Read the article](#)

[Refer a Patient](#)

[See more Pulmonary Medicine news](#)

[View Pulmonary Medicine specialty videos and Grand Rounds presentations](#)

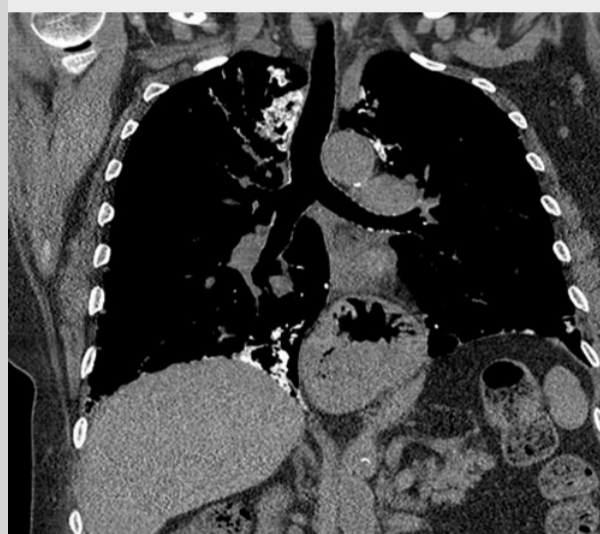
Research



[Mayo Clinic contributes to global insights on PH-ILD](#)

In a recent study published in the American Journal of Respiratory and Critical Care Medicine, investigators from the Pulmonary Vascular Research Institute GoDeep consortium analyzed outcomes in patients with PH-ILD across a large global network of expert centers.

[See the research](#)



[Amyloidosis and LCDD: Clinical overview and pulmonary implications](#)

Pulmonary manifestations of amyloidosis and light chain deposition disease often mimic more common disorders and might be underrecognized. Early diagnosis is essential to allow for timely evaluation and treatment.

[See the research](#)

Legacy of Innovation



[Heart-lung bypass](#)

A few years before this 1955 Mayo Clinic Proceedings article was published, experts were working on extracorporeal circulation and blood oxygenation. Explore the early beginnings of the mechanical bypass of the heart and lungs apparatus at Mayo Clinic.

[Read the article](#)

Education

Mayo Clinic School of Continuous Professional Development offers [live courses](#), [online continuing medical education \(CME\) courses](#) and [podcasts](#) to meet your CME needs.

[See all Pulmonary Medicine and Critical Care Medicine Continuing Medical Education courses](#)

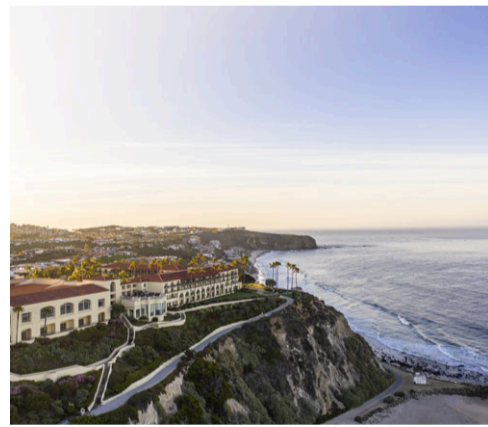


[Mayo Clinic Sleep Medicine Update 2026](#)

July 29-Aug. 1, 2026
Vancouver, British Columbia, and Livestream

Mayo Clinic Sleep Medicine Update is conducted by Mayo Clinic sleep researchers and clinicians. This course reviews the latest advances in practice and research using case-based scenarios enriched with personal clinical experiences.

[Register Now](#)



[Clinical Updates in Allergy and Immunology 2026](#)

July 30-Aug. 2, 2026
Dana Point, Calif., and Livestream

This course is designed to deliver a present-day understanding of allergic disorders with an emphasis on the translation of allergy knowledge to clinical practice.

[Register Now](#)



[Mayo Clinic Mechanical Ventilation Conference 2026](#)

Dec. 8-11, 2026
Snowbird, Utah, and Livestream

This conference provides high-quality education and hands-on instruction in mechanical ventilation management for healthcare professionals.

[Register Now](#)

Consults and Referrals

Phoenix/Scottsdale, Arizona
866-629-6362

Jacksonville, Florida
800-634-1417

Rochester, Minnesota
800-533-1564

[Online Referrals](#)

Resources

[Life-Changing Careers](#)

[Clinical Trials](#)

[Mayo Clinic School of Continuous Professional Development](#)



[Comments?](#)

We're interested in your feedback about this newsletter.

[Pass It On](#)

Invite a friend to subscribe.

[MayoClinic.org](#) | [Newsletter Archive](#) | [Contact](#) | [Medical Professionals](#)

Imagery is copyright Mayo Clinic, Getty Images, Shutterstock, or approved for use.