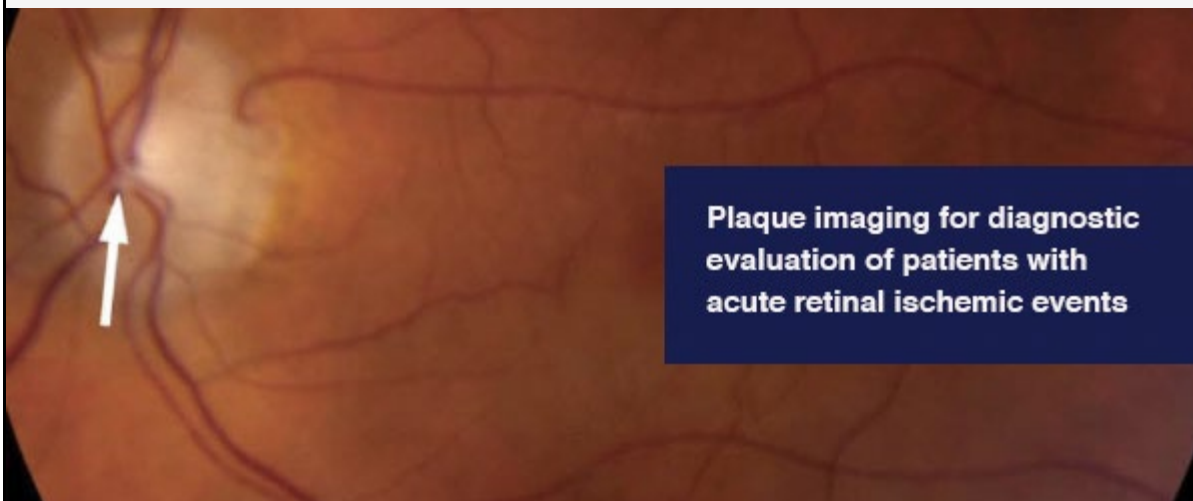


August 2021



Patient Care

[Easily make referrals to Mayo Clinic or access your patients' medical records](#)

Enroll in Mayo Clinic CareLink referring physician portal to make a referral and access your patients' medical records 24/7.

[See more Ophthalmology news](#)

[View Ophthalmology specialty videos and Grand Rounds presentations](#)



Research

[Study confirms CTG18.1 expansion in a large proportion of individuals with FECD](#)

The Fuchs' endothelial corneal dystrophy (FECD) phenotype commonly occurs in individuals who do not harbor CTG18.1 expansion but are part of families with CTG18.1 expansion.

[Findings support plaque imaging for diagnostic evaluation of patients with acute retinal ischemic events](#)

Researchers found that patients with retinal artery occlusion (RAO) had higher prevalence of intraplaque hemorrhage (IPH). The presence of IPH was independently associated with ipsilateral RAO.

[Small-sample study identifies four genes with causative associations with strabismus](#)

Next-generation genome sequencing approaches hold great promise in identifying rare variants associated with strabismus and elucidating the genetic causes of the disorder.

[See all Ophthalmology Clinical Trials at Mayo Clinic](#)



Education

Mayo Clinic School of Continuous Professional Development offers [live courses](#), [livestreaming courses](#), [online continuing medical education \(CME\) courses](#) and [podcasts](#) to meet your CME needs.

Medical education from Mayo Clinic experts is also available through [GIBLIB](#), a new on-demand medical education library. GIBLIB provides a free seven-day trial and a 25% discount on premium annual subscriptions including unlimited CME for Mayo Clinic learners. Simply enter code **MAYOCPD2021** to access this offer.

[Mayo Clinic Neuro-Ophthalmology and Beyond: A Multi-Disciplinary Clinical Case-Based Approach 2021](#)

Sept. 24-26, 2021, in Fernandina Beach, Fla.

Experts provide updates on afferent disorders (ischemic, inflammatory, infectious, compressive and hereditary optic neuropathies, select retinopathies, papilledema), efferent disorders (diplopia and nystagmus), neuro-radiology and pupil dysfunction.

COVID-19 Updates

Find [resources for providers](#) and answers to questions on [referrals and testing](#) on the Medical Professionals Resource Center.

Consults and Referrals

Phoenix/Scottsdale, Arizona
866-629-6362

Jacksonville, Florida
800-634-1417

Rochester, Minnesota
800-533-1564

[Online Referrals](#)

Resources

[Careers: All Physician Specialties](#)

[Clinical Trials](#)

[Mayo Clinic School of Continuous Professional Development](#)

Connect With Us



Receive real-time news and thought-leading insight

[Comments?](#)

We're interested in your feedback about this newsletter

[Pass It On!](#)

Invite a friend to subscribe

Mayo Clinic

13400 E. Shea Blvd.
Scottsdale, AZ 85259

4500 San Pablo Road
Jacksonville, FL 32224

200 First St. SW
Rochester, MN 55905



[MayoClinic.org](#) | [Newsletter Archive](#) | [Contact](#) | [Medical Professionals](#)