



Obstetrics and Gynecology Physician Update

May 2026

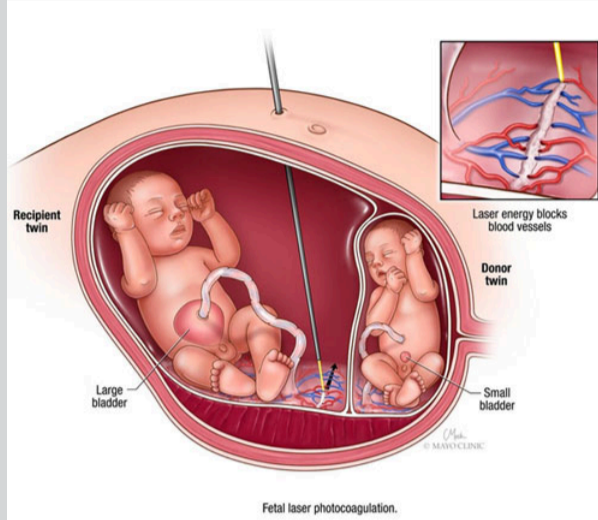
Patient Care



Fibroid treatment: Prioritizing personalized care and minimally invasive options

Uterine fibroid management at Mayo Clinic emphasizes individualized care through comprehensive imaging, multidisciplinary collaboration and minimally invasive options.

[Read the article](#)



Urgent fetal intervention required for TTTS

Twin-twin transfusion syndrome (TTTS) is a rare yet serious complication of monochorionic twins requiring urgent fetal intervention. Mayo Clinic is one of the few medical centers offering treatment of TTTS worldwide.

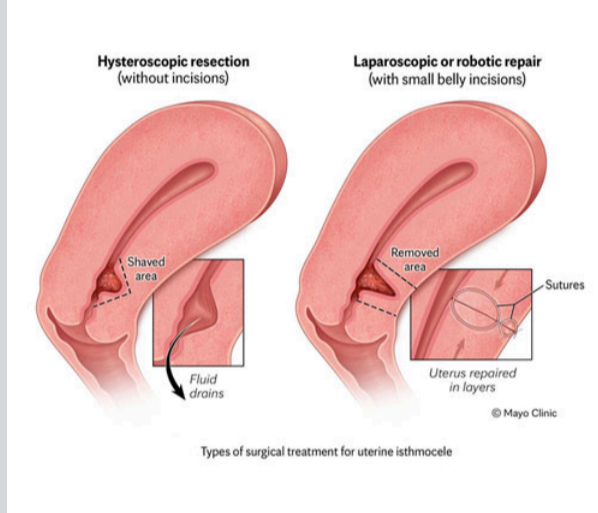
[Read the article](#)

[Refer a Patient](#)

[See more Obstetrics and Gynecology news](#)

[View Obstetrics and Gynecology specialty videos and Grand Rounds presentations](#)

Research



Uterine isthmocoele: Diagnostic criteria, imaging protocols and treatment options

C-section scar defects are becoming a more commonly recognized cause of abnormal uterine bleeding and secondary unexplained infertility. A recent Mayo Clinic study analyzed the clinical presentation, diagnosis and management of uterine isthmocoeles.

[See the research](#)

[See all Obstetrics and Gynecology Clinical Trials](#)

Education

Mayo Clinic School of Continuous Professional Development offers [live courses](#), [online continuing medical education \(CME\) courses](#) and [podcasts](#) to meet your CME needs.

[See all Obstetrics, Gynecology and Women's Health Continuous Medical Education courses](#)



Transforming Women's Health 2026

June 11-13, 2026
Chicago and Livestream

This course is designed to assist healthcare professionals in improving the care of women based on emerging scientific and clinical evidence related to medical conditions that are unique to, occur more frequently or present differently in women.

[Register Now](#)



Essentials in Endometriosis Online Course

Expires March 3, 2028

This online course addresses the basic pathophysiology of endometriosis, how to diagnose it, current management options, its relationship to pelvic pain, and the social policy and bioethics involved with this condition.

[Register Now](#)

Consults and Referrals

Phoenix/Scottsdale, Arizona
866-629-6362

Jacksonville, Florida
800-634-1417

Rochester, Minnesota
800-533-1564

[Online Referrals](#)

Resources

[Life-Changing Careers](#)

[Clinical Trials](#)

[Mayo Clinic School of Continuous Professional Development](#)



[Comments?](#)

We're interested in your feedback about this newsletter.

[Pass It On](#)

Invite a friend to subscribe.

[MayoClinic.org](#) | [Newsletter Archive](#) | [Contact](#) | [Medical Professionals](#)

Imagery is copyright Mayo Clinic, Getty Images, Shutterstock, or approved for use.