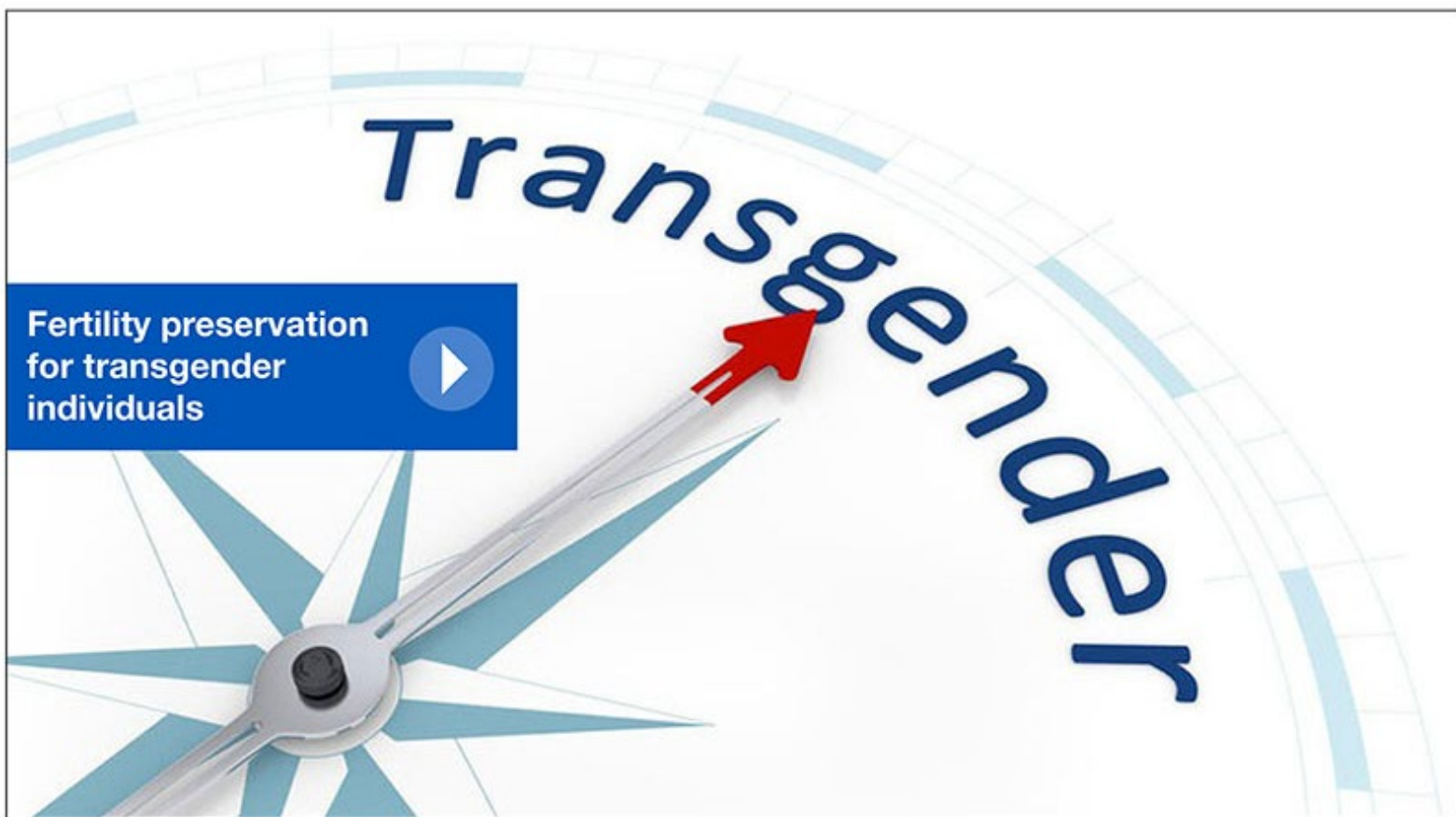


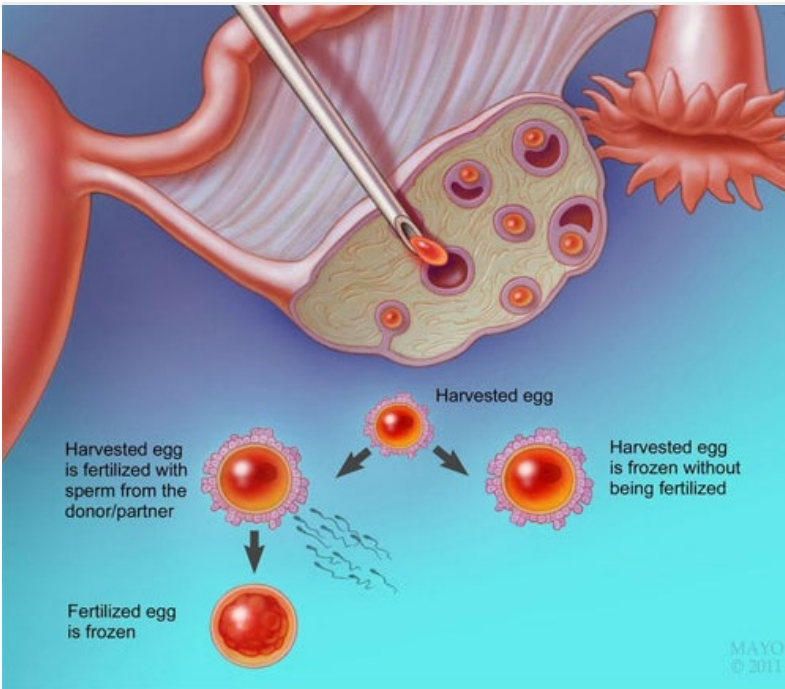


Obstetrics and Gynecology Physician Update

April 2022



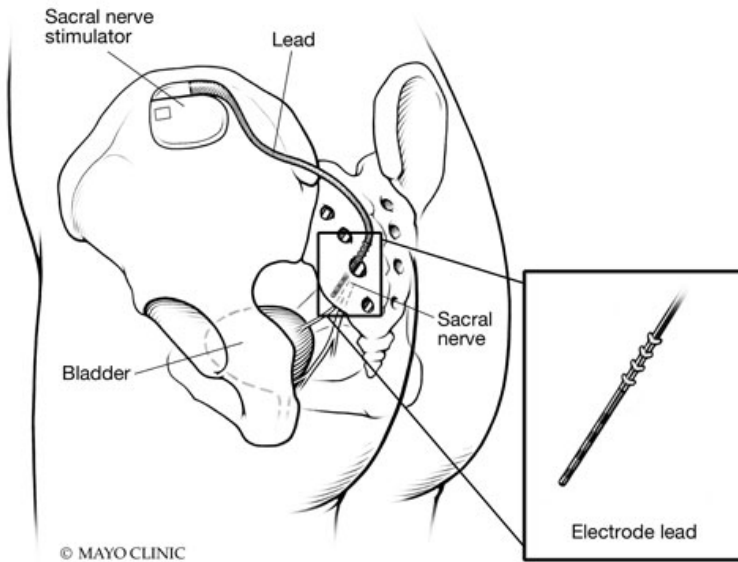
Patient Care



Fertility preservation available to transgender population at Mayo Clinic

At Mayo Clinic's campus in Rochester, Minnesota, reproductive endocrinology and infertility specialists provide services to help transgender individuals preserve fertility.

[Learn more](#)



Use of third line therapies increasing for treatment of overactive bladder

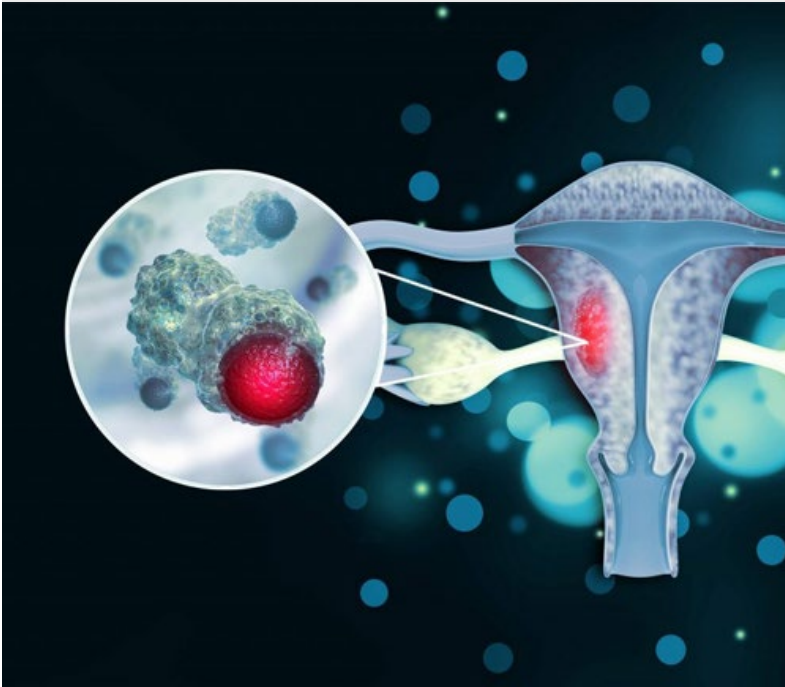
Referral to specialists may close a gap in care for women who do not have success with oral therapies for overactive bladder.

[Learn more](#)

[See more Obstetrics and Gynecology news](#)

[View Obstetrics and Gynecology specialty videos and Grand Rounds presentations](#)

Research



Investigations link uterine microbiome to endometrial cancer

Research supports that *Porphyromonas somerae*, a microbe particularly associated with endometrial cancer, is capable of pathogenic behavior and stimulated by one of the main risk factors for the disease — estrogen exposure.

[Learn more](#)

[See all Obstetrics and Gynecology Clinical Trials](#)

Education

Mayo Clinic School of Continuous Professional Development offers [live courses](#), [livestreaming courses](#), [online continuing medical education \(CME\) courses](#) and [podcasts](#) to meet your CME needs. Medical education from Mayo Clinic experts is also available through [GIBLIB](#), a new on-demand medical education library.

[See all Obstetrics, Gynecology and Women's Health Continuous Medical Education courses](#)



Transforming Women's Health 2022

June 9-11, 2022

Coronado, Calif., and Livestream

This course, for physicians, trainees and allied health staff, presents emerging scientific and clinical evidence about medical conditions unique to women, occurring more frequently in women or presenting differently in women.

[Register Now](#)



GRIT for Women in Medicine: Growth, Resilience, Inspiration & Tenacity 2022

Oct. 27-29, 2022

Westlake Village, Calif.

This course empowers medical professionals with resources to remove barriers and bias toward women in health care leadership and addresses need for a gender-balanced health care leadership team.

[Register Now](#)



Multidisciplinary Update in Breast Disease 2022

Nov. 3-5, 2022

Scottsdale, Ariz.

This course provides a multidisciplinary update in prevention, evaluation, diagnosis, management and treatment of benign and malignant breast diseases. High-risk cases and survivorship issues also are discussed.

[Register Now](#)

COVID-19 Updates and Resources

[Read more](#)

Consults and Referrals

Phoenix/Scottsdale, Arizona

866-629-6362

Jacksonville, Florida

800-634-1417

Rochester, Minnesota

800-533-1564

Online Referrals

Resources

[Life-Changing Careers](#)

[Clinical Trials](#)

[Mayo Clinic School of Continuous Professional Development](#)



Comments?

We're interested in your feedback about this newsletter.

Pass It On!

Invite a friend to subscribe.