

# An Adventure Ahead

## A Role in Shaping the Future of Nursing Practice

Research—collaborative or independently-based nursing research—is certain to be a unique part of your nursing experience with Mayo, no matter what path you decide to take. As in all your career pursuits, Mayo provides assistance with resources to support the research process, to publish your findings and to present your work to colleagues.

Research into all aspects of nursing practice is essential to continuous improvement and Mayo's professional environment. By implementing

evidence-based research, nurses strengthen Mayo's standard of excellence in patient care and sustain its commitment to excellence for generations of patients to come. Research also provides an opportunity for you to be recognized for your innovation and ingenuity.

No matter the career path you set for yourself, Mayo Clinic will be a partner in helping you achieve your professional and personal goals.



Embark  
on an  
Adventure

DESTINATION

[www.mayoclinic.org](http://www.mayoclinic.org)

**Job Line:** (507) 284-2500  
(888) 284-2500 Toll free

**Phone:** (800) 562-7984

Mayo Clinic  
Human Resources  
200 First Street SW  
Rochester, MN 55905



200 First Street SW  
Rochester, Minnesota 55905  
[www.mayoclinic.org](http://www.mayoclinic.org)

MC5152-04rev0907

©2007 Mayo Foundation for Medical Education and Research (MFMER). All rights reserved.  
MAYO, MAYO CLINIC and the triple-shield Mayo logo are trademarks and service marks of MFMER.



[www.mayoclinic.org](http://www.mayoclinic.org)

# Nursing

## See Yourself in an Extraordinary Environment

Whether you're an experienced nurse, a new graduate or a nursing student, we invite you to explore nursing with Mayo Clinic in Rochester, Minnesota. Here you will be a valued member of an outstanding health care team and you will experience the exceptional environment of one of the world's leading health care institutions.

While the staff and campus are large by many measures, the focus and priority is on individuals.

The clinic's mission is commitment to the best interest of each patient. To fulfill this mission, the environment at Mayo Clinic is characterized by the highest standards of patient care and professionalism. You will develop and manage the nursing care plan in collaboration with the medical plan, as well as coordinate care provided by health sciences professionals including pharmacists, dietitians, respiratory therapists, and social workers.

Your expertise and leadership will assure the highest quality care to patients in your charge and reflect the high standards that draw excellent nurses to Mayo Clinic. To ensure these standards continue, Mayo strives to hire the best nurses, embrace diversity, and encourage professional growth. Mayo cultivates leaders by fostering decision making and accountability at the nursing level and providing you with the resources that make it possible to practice professional nursing.



*The Magnet Hospital Recognition Status for Excellence in Nursing Service is given to hospitals meeting a set of criteria in high standards. These standards are the foundation of an environment that draws excellent nurses, like you, to it.*



CAREER: NURSING

# Equipped with a Compass... and More

As you begin your adventure with Mayo Clinic, you are equipped with a compass that will guide your daily work and interactions with colleagues. At the heart of this compass is a vision statement: *The Mayo Clinic Department of Nursing aspires to provide the best nursing care in the world.*

The Mayo Department of Nursing aspires to provide the best nursing care in the world.

### MISSION

**The Mayo Department of Nursing exists to:**

Deliver comprehensive nursing care of the highest standard to every Mayo patient through professional nursing practice, education and research.

Provide educational opportunities in clinical nursing and professional development for nursing staff; affiliated students and faculty; and regional, national and international nursing colleagues.

Improve patient care and advance the discipline of nursing through practice and collaborative research.

### PHILOSOPHY

The Mayo nursing community is committed to delivering comprehensive health care of the highest standard. Nursing practice encompasses caring, and competent and proficient methods of delivering patient care.

### CORE VALUES

**Professional environment**

**Continuity of patient care**

**Professional nurse accountability for nursing care**

### Orientation

A general orientation acquaints you with important features of the medical campus, employee resources, and benefit and policy information. In addition, you will receive an individualized orientation program that will prepare you for practicing in your nursing specialty environment, while valuing your past education and experiences. The program is coordinated by nursing education specialists in partnership with RN preceptors, who work closely with you throughout orientation.

### Professional Practice Environment

At Mayo Clinic your expertise as a professional nurse is an important contribution to the multi-disciplinary team of health care providers and physicians who are committed to the same goal. As a nurse at Mayo Clinic, you will provide personalized care that reflects the dignity and

worth of every individual. Your knowledge and experience are important to the decision making that will affect patient care in your clinical area. You will immediately sense the commitment to excellence in patient care among your colleagues.

Education and professional development are provided to assist you in meeting your professional goals and enhancing your expertise in your specialty area. You will have opportunities to teach patients, family members, students and other members of the health care team. The environment at Mayo encourages a dynamic atmosphere of intellectual exchange. A variety of opportunities is available to improve patient care and advance the discipline of nursing through practice and collaborative research.

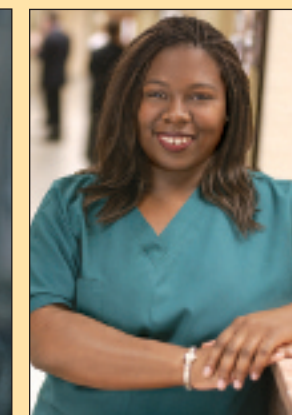
# A Path for Professional Practice

Mayo Clinic in Rochester has a multidisciplinary, team-oriented work environment that presents opportunities that may rarely be experienced elsewhere. Each year more than 300,000 patients seek medical services at Mayo Clinic in Rochester. More than 3,500 registered nurses representing a full range of clinical specialties provide care in more than 60 nursing units, including 10 critical care units and approximately 100 operating rooms. Opportunities exist in the perioperative, hospital inpatient and ambulatory care areas.



### Perioperative and Perianesthesia Nursing

Perioperative and perianesthesia nursing at Mayo Clinic encompasses many surgical specialties. Between Mayo's two Rochester hospitals (Rochester Methodist Hospital and Saint Marys Hospital), approximately 200 surgical procedures are performed daily in nearly 100 operating rooms.



### Inpatient Nursing

Hospital inpatient nurses at Mayo practice in more than 60 patient care units covering a full range of clinical specialties. A primary nursing model is practiced, emphasizing family-centered care, discharge teaching and the use of the nursing process.



### Ambulatory Nursing

Nurses in the ambulatory setting provide quality episodic care, in a single encounter or a series of encounters over time, to patients and their families as they promote wellness, prevent illness, and manage acute and chronic diseases through an efficient, effective and evidence-based nursing practice.