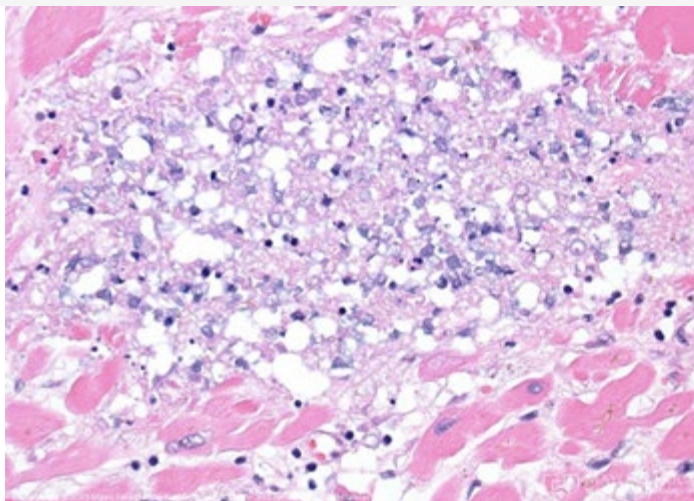


# CARDIOVASCULAR

## PHYSICIAN UPDATE E-EDITION



February 2020



Myocarditis: The great mimicker



## Patient Care

### [Retrospective study addresses contemporary issues in patients with isolated chronic aortic regurgitation](#)

Researchers report that patients had a higher mortality once they developed symptoms, and aortic valve surgery should be considered at an earlier stage of left ventricular enlargement.

### [Treatment options expand for patients with ATTR amyloidosis](#)

Amyloidosis is a disease of protein misfolding once considered rare, but increasingly implicated in heart failure. One form affecting the heart is transthyretin (ATTR) amyloidosis, for which treatment options are rapidly evolving.

### [Evolving areas of expertise shape the congenital cardiovascular speciality](#)

Congenital heart disease interventions are evolving due to the adult congenital heart disease subspecialty, improvement in transcatheter valve prostheses and imaging techniques, demand for cardiac replacement, and stem cell therapy.

### [Mitral valve surgery with septal myectomy may increase risk in patients with hypertrophic cardiomyopathy](#)

A retrospective study supports the need for increasing surgical experience with septal myectomy for obstructive hypertrophic cardiomyopathy to further improve outcomes.



## Research

### [Research identifies biomarker for myocarditis](#)

A research collaboration led by Mayo Clinic investigators identified the first biomarker for myocarditis, sera soluble ST2, and found it significantly elevated in men age 50 and younger compared with healthy controls and women.

See all [Cardiovascular Medicine](#) and [Cardiovascular Surgery](#) Clinical Trials at Mayo Clinic



## Education

### [Heart Failure Management for NP, PA, and Primary Care Providers](#)

March 26-28, 2020, in Lake Buena Vista, Fla.

The majority of care management for patients with heart failure is handled by primary care providers. This course's clinical format highlights practice dilemmas and key management strategies.

### [Echo Fiesta: An In-Depth Review of Adult Echocardiography for Sonographers and Physicians](#)

April 6-9, 2020, in San Antonio

Review the use of 2D echocardiography, Doppler and color flow imaging in assessing myocardial, ischemic, pericardial and valvular heart disease.

### [Basic to Advanced Echocardiography | Island Ultrasound](#)

May 13-16, 2020, in Hilton Head Island, S. C.

Topics include echocardiographic assessment of left and right ventricular function, including presentations on diastolic function and strain imaging for assessing myocardial function, plus disease states for which echocardiography is useful.

### [Mayo Clinic Cardiovascular Board Reviews](#)

Designed to map to cardiology board exams and offering a solid base of fundamentals and updates in cardiology, these review courses provide everything you need to be confident walking into your boards.

See all [Cardiovascular Medicine CME courses](#)



## In the Video Center

### [Virtual reality in medicine: Beyond bulky goggles](#)

Electrophysiologist Suraj Kapa, M.D., discusses virtual reality and how this technology is being applied to medicine.

### [Congenital heart disease and the management of complex arrhythmias](#)

Electrophysiologist Christopher J. McLeod, M.B., Ch.B., Ph.D., discusses the management of complex cardiac arrhythmias in the setting of congenital heart disease in adults.

[View Cardiovascular Diseases specialty and Grand Rounds presentations](#)

## Consults and Referrals

## **Phoenix/Scottsdale, Arizona**

[Cardiovascular Medicine](#)

855-419-7171 (toll-free)

[Cardiovascular Surgery](#)

623-404-4108

[General consults or after hours](#)

855-993-4095 (toll-free)

## **Jacksonville, Florida**

[Cardiovascular Medicine](#)

855-900-9075 (toll-free)

[Cardiovascular Surgery](#)

904-479-1501

[General consults or after hours](#)

888-988-8634 (toll-free)

## **Rochester, Minnesota**

[Cardiovascular Medicine](#)

877-587-5420 (toll-free)

[Cardiovascular Surgery](#)

888-597-2998 (toll-free)

[Pediatric Cardiology](#)

866-864-9363 (toll-free)

[General consults or after hours](#)

855-736-7604 (toll-free)

## **Eau Claire, Wisconsin**

[Cardiovascular Medicine and Surgery](#)

715-227-5013

[Online Referrals](#)

## **Resources**

[Careers: All Physician Specialties](#)

[Clinical Trials](#)

[Mayo Clinic School of Continuous Professional Development](#)

## **Connect With Us**



[Follow us on Twitter](#)

Receive real-time news and thought-leading insight

**the heart.org** Medscape Cardiology

[Check us out on Medscape Cardiology](#)

Mayo Clinic joins forces with Medscape Cardiology to bring you the latest perspective on clinical trials, patient care and news.

---

**Comments?**

We're interested in your feedback about this newsletter.

**Pass It On!**

Invite a friend to subscribe.

**Mayo Clinic**

13400 E. Shea Blvd.  
Scottsdale, AZ 85259

4500 San Pablo Road  
Jacksonville, FL 32224

200 First St. SW  
Rochester, MN 55905



[MayoClinic.org](#) | [Newsletter Archive](#) | [Contact](#) | [Medical Professionals](#)