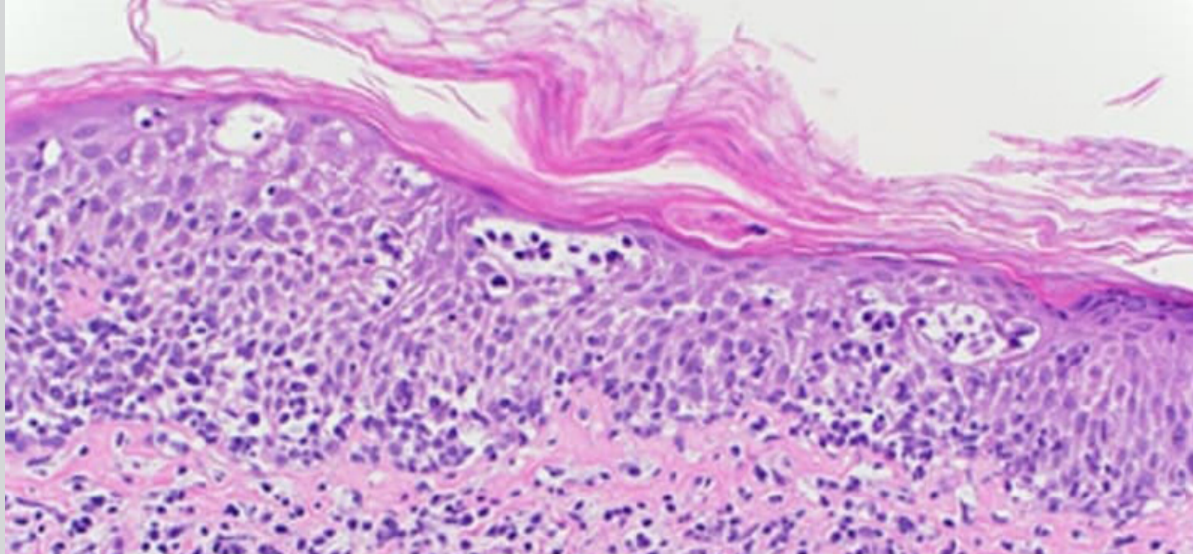


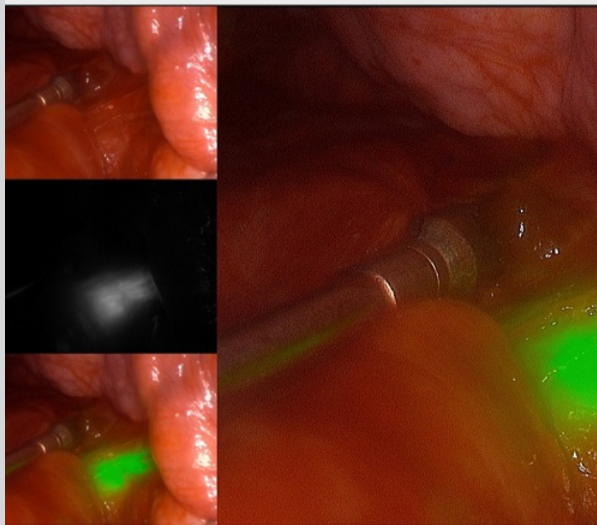
Cancer Physician Update

November 2023



Optimal cutaneous lymphoma care

Patient Care



Overcoming CT-to-body divergence in bronchoscopic biopsy of lung nodules

CT-to-body divergence is a challenge in lung cancer diagnosis via bronchoscopy. By combining mobile 3D imaging with shape-sensing robotic-assisted bronchoscopy, Mayo Clinic researchers achieve tool-in-lesion in 96.7% of cases.

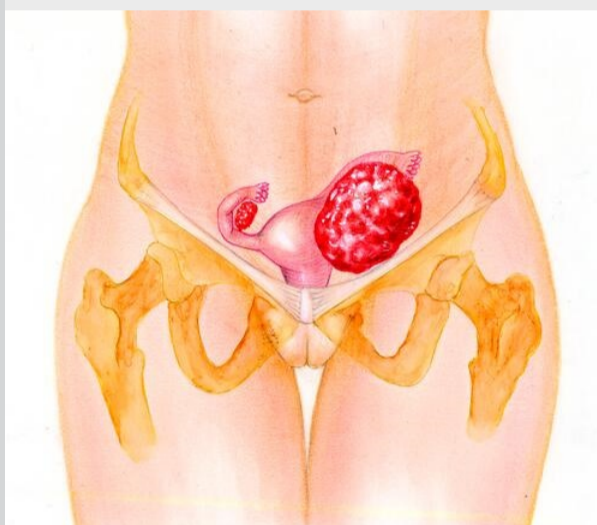
[Learn more](#)

[Refer a Patient](#)

[See more Cancer news](#)

[View Cancer specialty videos and Grand Rounds presentations](#)

Research



Fluorescence-guided surgical techniques applied to ovarian cancer

In a 2022 study, Mayo Clinic researchers reported advanced tumor detection and resection in epithelial ovarian cancer using fluorescence-guided surgery. Applying this technique for ovarian cancer opens up more options for patients.

[Learn more](#)

[See all Cancer Clinical Trials at Mayo Clinic](#)

Education

Mayo Clinic School of Continuous Professional Development offers live courses, livestreaming courses, online continuing medical education (CME) courses and podcasts to meet your CME needs.

[See all Hematology and Oncology Continuing Medical Education courses](#)



21st Annual Mayo Clinic Hematology Review

Jan. 27, 2024
Bloomington, Minn., and Livestream

At this one-day program, all health professionals with an interest in hematology receive an overview of the most recent advancements from meetings, publications and abstracts over the last year.

[Register Now](#)



Mayo Clinic Surgical Pathology Update 2024

Feb. 15-17, 2024
Phoenix and Livestream

This course provides need-to-know updates on a broad range of subjects including breast, genitourinary, gynecologic, gastrointestinal, thoracic, head and neck, soft tissue, dermatopathology, cytopathology and hematopathology.

[Register Now](#)



Mayo Clinic Practical Integrative Medicine: Renew, Rejuvenate, Inspire & Connect 2024

March 7-9, 2024
Orlando, Fla., and Livestream

Attendees access diverse content from leaders in integrative medicine. The course covers the evidence behind various modalities and their implementation into clinical practice.

[Register Now](#)

Consults and Referrals

Phoenix/Scottsdale, Arizona
866-629-6362

Jacksonville, Florida
800-634-1417

Rochester, Minnesota
800-533-1564

[Online Referrals](#)

Resources

[Life-Changing Careers](#)

[Clinical Trials](#)

[Mayo Clinic School of Continuous Professional Development](#)



Comments?

We're interested in your feedback about this newsletter.

Pass It On

Invite a friend to subscribe.