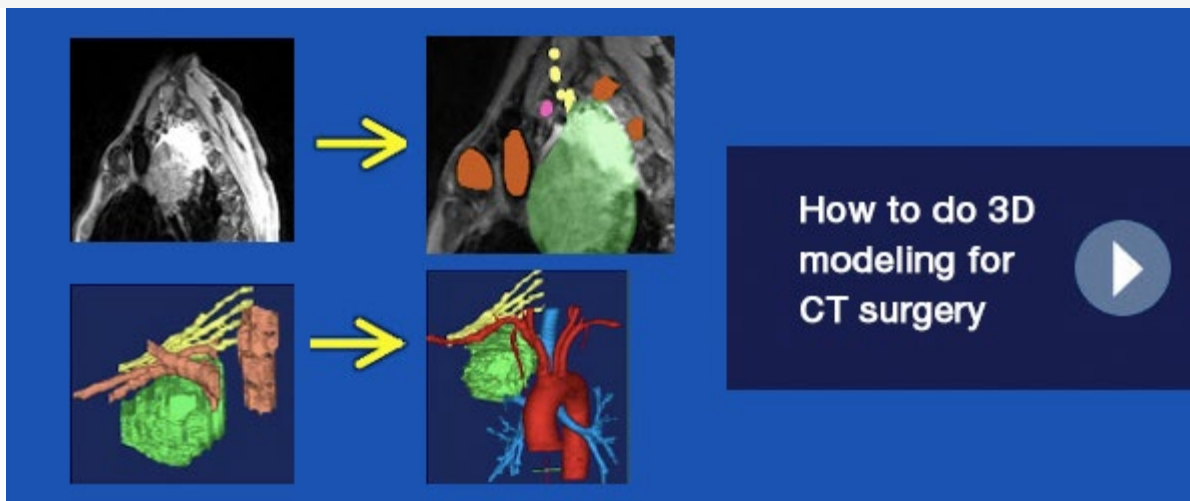


# CANCER

## PHYSICIAN UPDATE E-EDITION



November 2019



### Patient Care

#### Scalp cooling therapy reduces chemotherapy-related hair loss

A cap patients wear during chemotherapy treatment circulates coolant to chill the scalp to 63 to 67 degrees Fahrenheit, constricting blood vessels to keep chemotherapy drugs from reaching the hair follicles.



### Research

#### Study offers new insights on male breast cancer

Mayo investigators have identified unique practice patterns and prognosis factors in male breast cancer, and associated health disparities. Studies indicate the incidence of breast cancer in males may be on the rise.

#### Data support expanded treatment options for patients with kidney cancer

A review of patients treated with partial nephrectomy, percutaneous radiofrequency ablation or percutaneous cryoablation for small renal masses found no clinical or statistical difference in five-year outcomes.

#### Researchers identify distinct pathways for lung adenocarcinoma

Identification of the pathways by which lung adenocarcinoma develops may help specialists determine which patients will benefit from a

particular treatment and offer alternatives to patients whose cancer subtypes are unlikely to respond.

### [Genetic alteration of immune-regulatory protein may improve colorectal cancer outcomes](#)

Study outcomes support increasing expression of the PD-L1 protein in colorectal cancer cells to improve chemotherapy effectiveness. PD-L1 may be a predictive biomarker for how patients respond to cancer treatment.

### [6- and 10-year outcomes impact the cost-effectiveness of prostate cancer treatment](#)

A cost-effectiveness study indicates ProtecT trial outcomes actually support the upfront treatment of more-aggressive prostate cancers and the surveillance of less aggressive prostate cancers.

### [T cells may play a role in fighting follicular lymphoma](#)

Some patients with follicular lymphoma fare better than others: Researchers found that patients with poor immune responses to follicular lymphoma exhibited a reduction in costimulatory receptors on their T cells.

[See all Cancer Clinical Trials at Mayo Clinic](#)



## Education

### [Mayo Clinic Pathology Update 2020](#)

Jan. 23-25, 2020, in Phoenix

Themes include newly described lesions and rediscovered entities in breast pathology and diagnosis of gastric polyps and early lesions in the stomach, with a focus on diagnostic challenges, molecular updates and emerging issues.

### [Advances in Breast Cancer Management 2020](#)

Feb. 7-8, 2020, in Ponte Vedra Beach, Fla.

Topics include imaging, radiation therapy, brain metastases, genomic testing, systemic therapy (including novel immunotherapies and the role of the immune system in managing breast cancer) and symptom management for survivors.

### [Cardio-Oncology: Practical Strategies to Advance Your Practice 2020](#)

Feb.13-15, 2020, in Scottsdale, Ariz.

Review the current state of knowledge of common cardiovascular complications in patients with cancer, such as heart failure, myocardial ischemia, hypertension, thromboembolism and arrhythmia associated with frequently used anti-cancer medications.

[See all Hematology and Oncology Continuous Professional Development courses](#)



## In the Video Center

### [Gastric cancer overview](#)

Travis E. Grotz, M.D., discusses gastric cancer risks, signs and symptoms, diagnosis, and staging, plus treatments including hyperthermic intraperitoneal chemotherapy (HIPEC) and immunotherapy.

[View Cancer specialty and Grand Rounds presentations](#)

## Consults and Referrals

[Phoenix/Scottsdale, Arizona](#)  
877-673-2739 (toll-free)

[Jacksonville, Florida](#)  
855-375-9686 (toll-free)

[Rochester, Minnesota](#)  
855-995-1503 (toll-free)

[Online Referrals](#)

## Resources

[Careers: All Physician Specialties](#)

[Clinical Trials](#)

[Early Cancer Therapeutics Group](#)

[Mayo Clinic School of Continuous Professional Development](#)

## Connect With Us



Receive real-time news and thought-leading insight

### Comments?

We're interested in your feedback about this newsletter

### Pass It On!

Invite a friend to subscribe

### Mayo Clinic

13400 E. Shea Blvd.  
Scottsdale, AZ 85259

4500 San Pablo Road  
Jacksonville, FL 32224

200 First St. SW  
Rochester, MN 55905



[MayoClinic.org](#) | [Newsletter Archive](#) | [Contact](#) | [Medical Professionals](#)