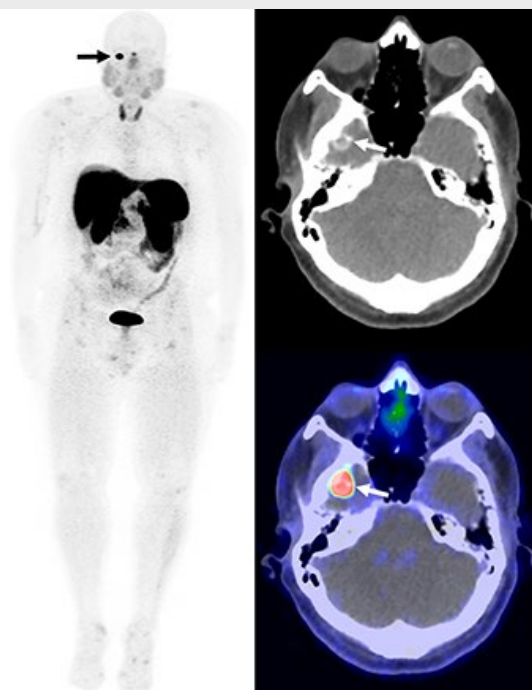




Endocrinology Physician Update

November 2021

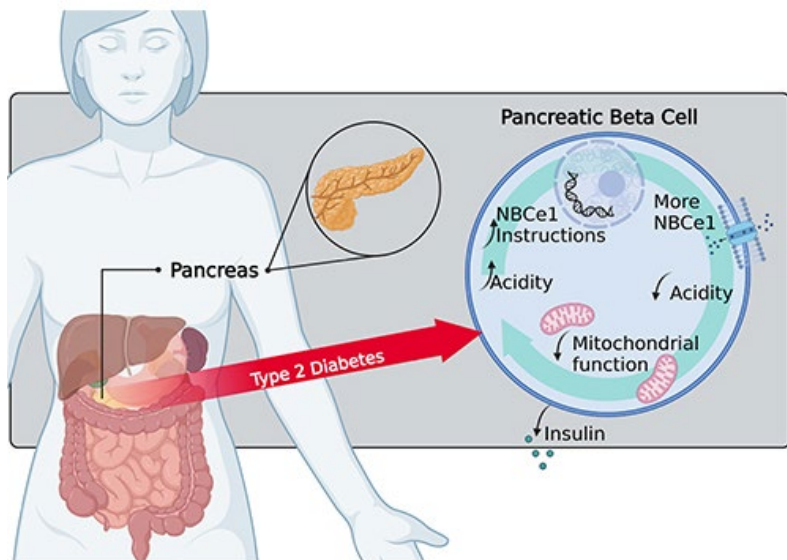
Research



Intact FGF23 assay speeds identification of tumor-induced osteomalacia

Research at Mayo Clinic addresses the two main challenges with patients with oncogenic osteomalacia: identification of the disease and the localization of the tumor-producing fibroblast growth factor 23 (FGF23).

[Learn more](#)



Increased protein production found in people with type 2 diabetes

When stressed by obesity and type 2 diabetes, human beta cells respond by making more NBCe1 protein, decreasing those cells' ability to produce and release insulin in response to sugar.

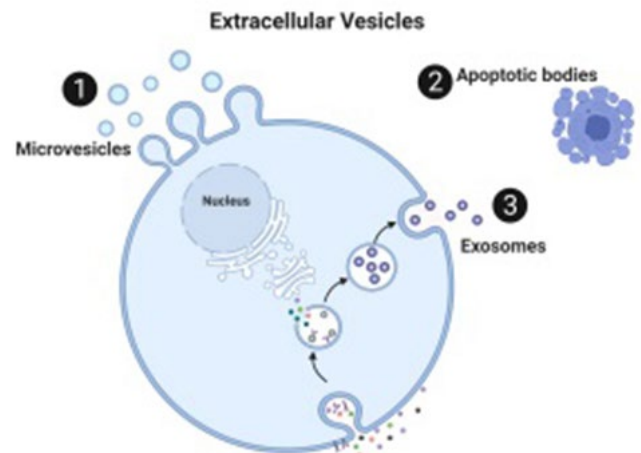
[Learn More](#)



Researchers identify a new approach to boosting the action of steroids

Researchers studying inflammation in the context of diabetes and metabolism found that pharmacological inhibitors of BRD9, which act as inflammatory suppressors alone, are able to synergize with dexamethasone.

[Learn more](#)



Biomarker may provide an early indication of type 1 diabetes

Scientists investigating strategies to restore beta cell function in individuals with type 1 diabetes found that extracellular vesicles encouraged inflammation of pancreatic beta cells in mouse and cell culture models.

[Learn more](#)

[See all Endocrinology Clinical Trials at Mayo Clinic](#)

Patient Care



Easily make referrals to Mayo Clinic or access your patients' medical records

Enroll in Mayo Clinic CareLink referring physician portal to make a referral and access your patients' medical records 24/7. CareLink may be accessed on desktop and tablet browsers.

[Learn more](#)

[See more Endocrinology news](#)

[View Endocrinology specialty videos and Grand Rounds presentations](#)

Education

Mayo Clinic School of Continuous Professional Development offers [live courses](#), [livestreaming courses](#), [online continuing medical education \(CME\) courses](#) and [podcasts](#) to meet your CME needs. Medical education from Mayo Clinic experts is also available through [GIBLIB](#), a new on-demand medical education library.

[See all Endocrinology Continuous Professional Development courses](#)



Endocrine Update 2022

Jan. 24-28, 2022

Lahaina, Hawaii, and Livestream

Topics include SGLT 2 inhibitors or GLP-1 analogs in the management of kidney disease, surgical management of prolactinomas, radiofrequency ablation for the management of benign thyroid disease, and bone health in patients with osteoporosis undergoing orthopedic procedures.

Register Now



22nd Annual Nutrition and Wellness in Health and Disease

Oct. 16-18, 2022

Coronado, Calif.

Healthy lifestyle behaviors are vital components in the promotion of health and treatment of disease. This program highlights ambulatory nutrition and wellness topics via a multidisciplinary faculty.

Register Now

COVID-19 updates & resources

[Read more](#)

Consults and Referrals

Phoenix/Scottsdale, Arizona

866-629-6362

Jacksonville, Florida

800-634-1417

Rochester, Minnesota

800-533-1564

[Online Referrals](#)

Resources

[Life-Changing Careers: Physicians & Scientists](#)

[Clinical Trials](#)

[Mayo Clinic School of Continuous Professional Development](#)



[Comments?](#)

We're interested in your feedback about this newsletter.

[Pass It On!](#)

Invite a friend to subscribe.

[MayoClinic.org](#) | [Newsletter Archive](#) | [Contact](#) | [Medical Professionals](#)
