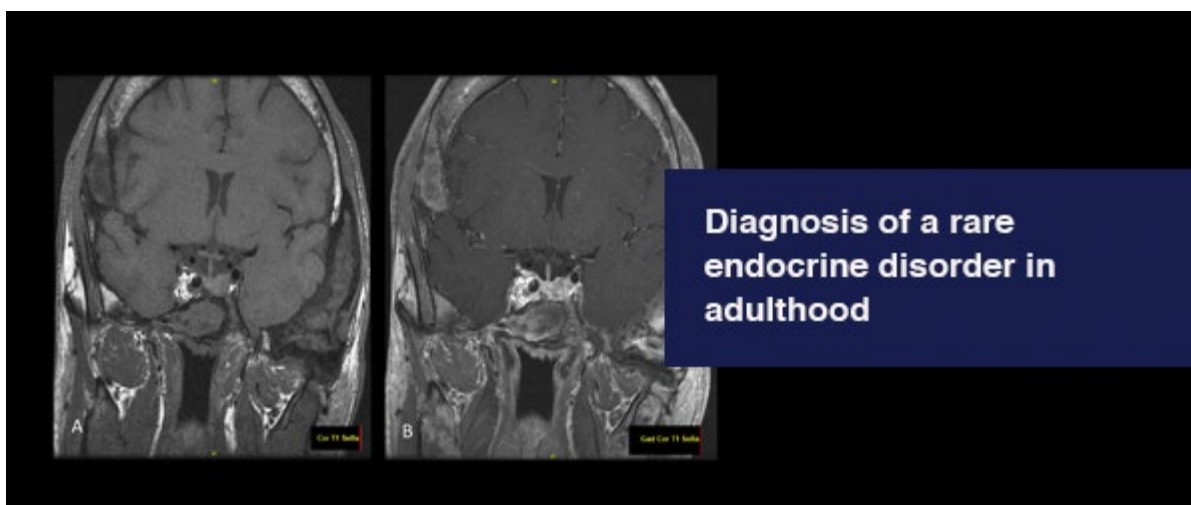


May 2021

## COVID-19 Updates

Find resources for providers and answers to questions on referrals and testing on the Medical Professionals Resource Center



## Patient Care

[Dr. William J. Mayo: 'Attend your medical societies'](#)

Consulting staff at Mayo Clinic are active in local, regional, national and international medical societies.

[Patients with fibrous dysplasia should be evaluated for possible endocrinopathy and McCune-Albright syndrome](#)

Jacob D. Kohlenberg, M.D., and Peter J. Tebben, M.D., discuss a rare disorder in a case from the endocrine teaching clinics.

[See more Endocrinology news](#)

[View Endocrinology specialty videos and Grand Rounds presentations](#)



## Research

### [Charting a course for a marked increase of microscopic papillary thyroid carcinomas](#)

Thyroid cancer incidence has increased, owing to higher screening and detection rates. Marius N. Stan, M.D., discusses options of watchful waiting or treatment when thyroid nodules are small.

### [Disparities in diabetes prescriptions constitute a barrier to applying evidence-based medicine](#)

Research indicates that lower income individuals of any race are less likely to receive guideline-recommended treatments for their diabetes and more likely to experience severe hypoglycemia or hyperglycemia events.

### [Mayo Clinic Proceedings goes fully digital for 2021](#)

Mayo Clinic Proceedings' move to online-only access provides subscribers with access to new content and the ability to search content by specialty or subject area — plus connections to related multimedia.

[See all Endocrinology Clinical Trials at Mayo Clinic](#)



## Education

Mayo Clinic School of Continuous Professional Development offers [live courses](#), [livestreaming courses](#), [online continuing medical education \(CME\) courses](#) and [podcasts](#) to meet your CME needs.

Medical education from Mayo Clinic experts is also available through [GIBLIB](#), a new on-demand medical education library. GIBLIB provides a free 7-day trial and 25% discount on premium annual subscriptions including unlimited CME for Mayo Clinic learners. Simply enter code **MAYOCPD2021** to access this offer.

### [21st Annual Nutrition and Wellness in Health and Disease 2021 — LIVESTREAM](#)

Sept. 20-21, 2021

Nutrition, physical activity and other healthy lifestyle behaviors are vital components in both the promotion of health and the treatment of disease. This program highlights ambulatory nutrition and wellness topics.

## Consults and Referrals

Phoenix/Scottsdale, Arizona  
866-629-6362

Jacksonville, Florida  
800-634-1417

Rochester, Minnesota  
800-533-1564

[Online Referrals](#)

## Resources

[Careers: All Physician Specialties](#)

[Clinical Trials](#)

[Mayo Clinic School of Continuous Professional Development](#)

## Connect With Us



---

[Comments?](#)

We're interested in your feedback about this newsletter.

[Pass It On!](#)

Invite a friend to subscribe.

**Mayo Clinic**

13400 E. Shea Blvd.  
Scottsdale, AZ 85259

4500 San Pablo Road  
Jacksonville, FL 32224

200 First St. SW  
Rochester, MN 55905



[MayoClinic.org](http://MayoClinic.org) | [Newsletter Archive](#) | [Contact](#) | [Medical Professionals](#)

---