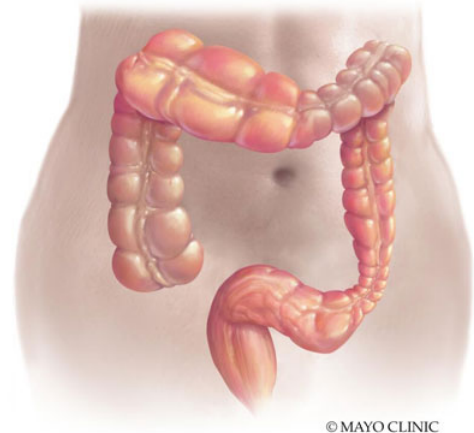


Digestive Diseases Physician Update

September 2022

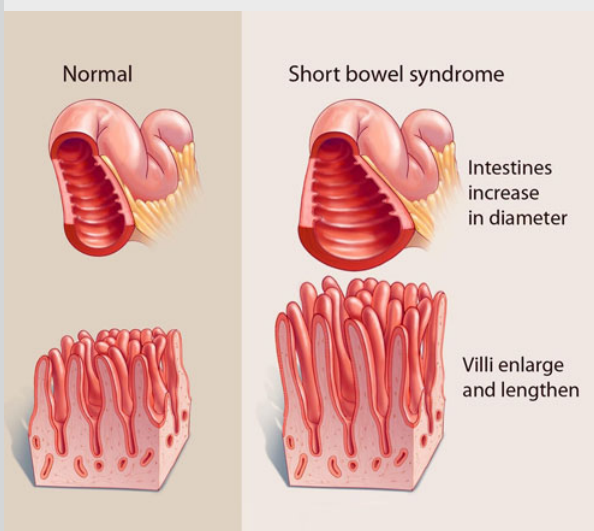
Patient Care



Health care maintenance helps optimize care for patients with inflammatory bowel disease

Following preventive care recommendations is extremely important in the management of patients with inflammatory bowel disease.

[Learn more](#)



Successful management of patients with short bowel syndrome requires multidisciplinary approach

Adult patients diagnosed with this complex condition can benefit from nutritional support, fluid and electrolyte management, pharmacologic therapies, and surgery provided by an experienced team.

[Learn more](#)

[See more Digestive Diseases news](#)

[View Digestive Diseases specialty videos and Grand Rounds presentations](#)

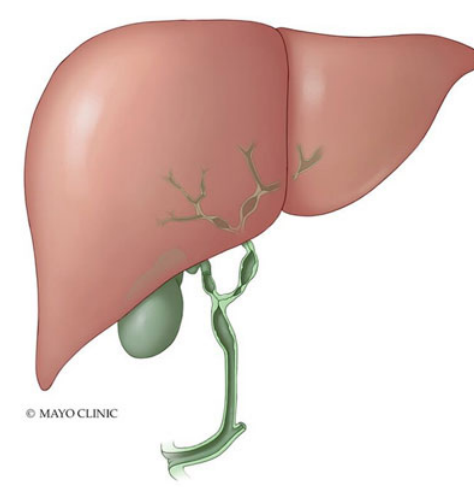
Research



Study analyzes procedure-related injury prevalence, distribution and severity among active endoscopists

Findings reveal increasing rates of musculoskeletal symptoms and injury among endoscopists, many of which are significant enough to affect their daily function.

[Learn more](#)



Resolution of jaundice after endoscopic treatment of biliary strictures associated with longer transplant-free survival in patients with primary sclerosing cholangitis

The likelihood of resolution is affected by demographic, hepatic and biliary variables and can be predicted using noninvasive data.

[Learn more](#)

[See all Gastroenterology and Hepatology Clinical Trials at Mayo Clinic](#)

Education

Mayo Clinic School of Continuous Professional Development offers live courses, livestreaming courses, online continuing medical education (CME) courses and podcasts to meet your CME needs. Medical education from Mayo Clinic experts is also available through GIBLIB, a new on-demand medical education library.

[See all Gastroenterology Continuing Medical Education courses](#)



8th Annual Gastroenterology & Hepatology Update with Interactive Live Endoscopy — 2022

Sept. 30-Oct. 1, 2022
Phoenix and Livestream

Course faculty members discuss common disorders — including nausea, nutrition in IBD, gastroparesis, acute and chronic pancreatitis, alcoholic hepatitis, fatty liver, and hepatocellular carcinoma — and GI endoscopy.

[Register Now](#)

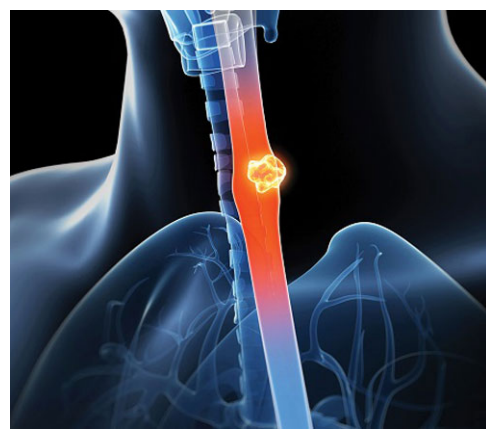


Mayo Clinic Hepato-Pancreato-Biliary Cancer Symposium 2022

Oct 21-22, 2022
Las Vegas and Livestream

This update describes the latest treatment options for patients with hepato-pancreato-biliary cancers, including surgery, radiation, locoregional approaches and systemic therapies.

[Register Now](#)



10th Annual Mayo Clinic Esophageal Diseases Course

Dec. 2-3, 2022
Phoenix and Livestream

This course discusses advances in diagnosis, therapy and new disease identification. Subjects include high-resolution manometry and impedance monitoring; endoscopic detection techniques and treatments for Barrett's esophagus; and eosinophilic esophagitis and other new diseases.

[Register Now](#)



Mayo Clinic Gastroenterology & Hepatology 2023

March 22-25, 2023
Amelia Island, Fla. and Livestream

This update presents new approaches to the diagnosis and management of gastrointestinal and liver diseases, including general gastroenterology, inflammatory bowel disease, colorectal neoplasia, esophageal diseases, motility, nutrition, pancreaticobiliary disorders, endoscopy and hepatology.

[Register Now](#)

COVID-19 Updates and Resources

[Read more](#)

Consults and Referrals

Phoenix/Scottsdale, Arizona
844-779-5824

Jacksonville, Florida
844-529-7563

Rochester, Minnesota
844-561-0880

Mayo Clinic Health System
855-392-8400

[Online Referrals](#)

Resources

[Life-Changing Careers](#)

[Clinical Trials](#)

[Mayo Clinic School of Continuous Professional Development](#)



[Comments?](#)

We're interested in your feedback about this newsletter.

[Pass It On](#)

Invite a friend to subscribe.