

Digestive Diseases Physician Update

November 2022

Patient Care



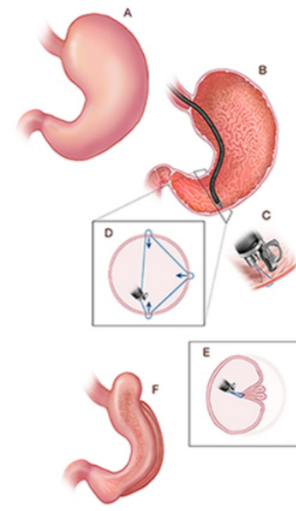
Screening people with high risk of developing pancreatic cancer



[See more Digestive Diseases news](#)

[View Digestive Diseases specialty videos and Grand Rounds presentations](#)

Research



MERIT-Trial demonstrates efficacy and safety of ESG in patients with obesity

Endoscopic sleeve gastroplasty (ESG), combined with lifestyle modifications, is a safe intervention that can help patients achieve and maintain significant weight loss and improvements in metabolic comorbidities.

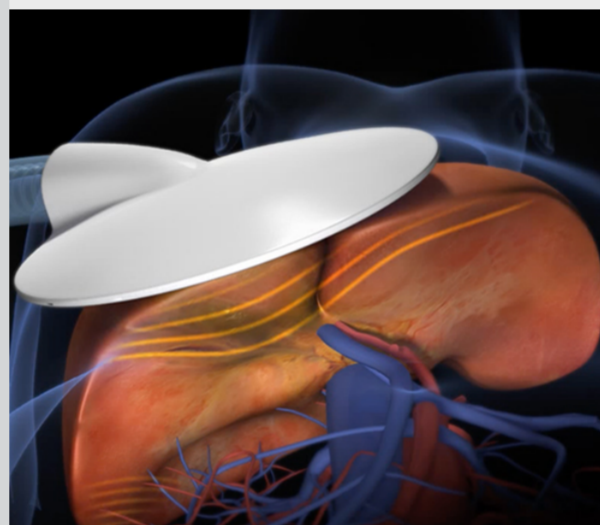
[Learn more](#)



CBD treatment showed no significant benefit over placebo in trial involving patients with functional dyspepsia who have normal gastric emptying

A randomized, double-blind, controlled trial showed that symptom relief associated with cannabidiol (CBD) and placebo were not significantly different.

[Learn more](#)



MRE shows promise as noninvasive method for monitoring liver disease progression and predicting patient outcomes

Study suggests that liver stiffness measurement obtained through magnetic resonance elastography (MRE) can help individualize care and predict outcomes in patients with nonalcoholic fatty liver disease.

[Learn more](#)

[See all Gastroenterology and Hepatology Clinical Trials at Mayo Clinic](#)

Education

Mayo Clinic School of Continuous Professional Development offers live courses, livestreaming courses, online continuing medical education (CME) courses and podcasts to meet your CME needs. Medical education from Mayo Clinic experts is also available through GIBLIB, a new on-demand medical education library.

[See all Gastroenterology Continuing Medical Education courses](#)



Mayo Clinic Gastroenterology & Hepatology 2023 March 22-25, 2023 Amelia Island, Fla., and Livestream

This update presents new approaches to the diagnosis and management of gastrointestinal and liver diseases, including general gastroenterology, inflammatory bowel disease, colorectal neoplasia, esophageal diseases, motility, nutrition, pancreaticobiliary disorders, endoscopy and hepatology.

[Register Now](#)



Innovations in Management of Pancreatic Conditions and Therapies: The Mayo Clinic IMPACT Course 2023 April 21, 2023 Rochester, Minn., and Livestream

This one-day course with pancreas experts highlights recent innovations in the management of pancreatic conditions and therapies that can be incorporated into clinical practice.

[Register Now](#)

COVID-19 Updates and Resources

[Read more](#)

Consults and Referrals

Phoenix/Scottsdale, Arizona
844-779-5824

Jacksonville, Florida
844-529-7563

Rochester, Minnesota
844-561-0880

Mayo Clinic Health System
855-392-8400

[Online Referrals](#)

Resources

[Life-Changing Careers](#)

[Clinical Trials](#)

[Mayo Clinic School of Continuous Professional Development](#)



Comments?

We're interested in your feedback about this newsletter.

Pass It On

Invite a friend to subscribe.