

Digestive Diseases Physician Update

January 2024

Patient Care



Video: Mayo Clinic's Esophageal Clinic provides comprehensive testing and endoscopic solutions for patients

Physicians at Mayo Clinic's Esophageal Clinic discuss some of the novel diagnostic and treatment options that are available within the clinic.

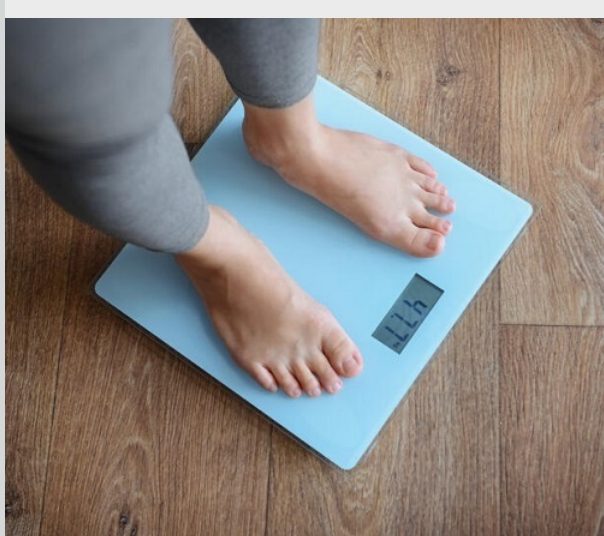
[Learn more](#)

[Refer a Patient](#)

[See more Digestive Diseases news](#)

[View Digestive Diseases specialty videos and Grand Rounds presentations](#)

Research



Treatment of obesity by hepatologists can have a significant impact on associated morbidities

Researchers discuss the role of dietary supplements, glucagon-like peptide 1 receptor agonists, sodium-glucose cotransporter-2 inhibitors and bariatric surgery in patients with gastrointestinal and liver diseases.

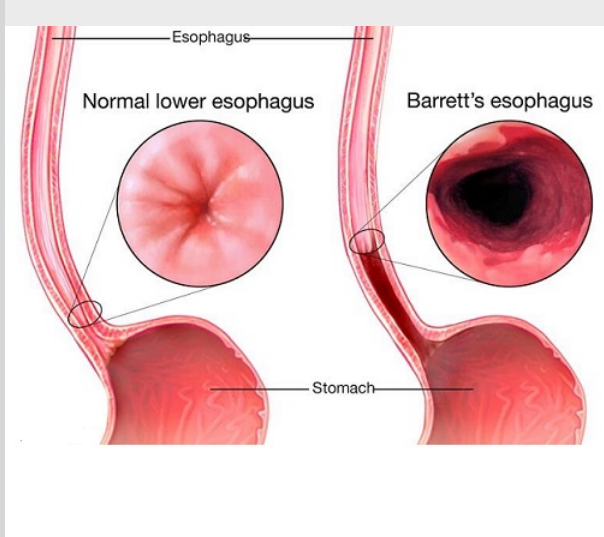
[Learn more](#)



New genetic markers help identify Lynch syndrome-associated colorectal cancer with high accuracy

Studies are underway to determine if these genetic markers are in stool samples and whether this could lead to a noninvasive screening option for patients with Lynch syndrome.

[Learn more](#)



Machine learning model developed on an EHR database predicts incident BE and EAC risk with improved accuracy

Researchers are hopeful that this model may enable effective implementation of minimally invasive screening technology for Barrett esophagus (BE) and esophageal adenocarcinoma (EAC).

[Learn more](#)



Endoluminal bariatric and metabolic therapies (EBMTs) emerge as effective treatments for promoting weight loss and metabolic improvements

Researchers document the current state of EBMTs and clinical outcomes associated with these approaches.

[Learn more](#)

Education

Mayo Clinic School of Continuous Professional Development offers [live courses](#), [livestreaming courses](#), [online continuing medical education \(CME\) courses](#) and [podcasts](#) to meet your CME needs.

[See all Gastroenterology Continuing Medical Education courses](#)



Mayo Clinic Gastrointestinal Cancers 2024 March 14-16, 2024 Maui, Hawaii

This course updates practicing physicians on evidence-based treatments available for patients with gastrointestinal cancers, including esophageal, gastric, hepatocellular, bile duct, pancreatic, small bowel, anal, colorectal and neuroendocrine.

[Register Now](#)



Innovations in Management of Pancreatic Conditions and Therapies: The Mayo Clinic IMPACT Course April 19, 2024 Rochester, Minn., and Livestream

During this course, pancreas experts highlight recent innovations in the management of pancreatic conditions and therapies that can be incorporated into clinical practice.

[Register Now](#)

Consults and Referrals

Phoenix/Scottsdale, Arizona
866-629-6362

Jacksonville, Florida
800-634-1417

Rochester, Minnesota
800-533-1564

Mayo Clinic Health System
855-392-8400

[Online Referrals](#)

Resources

[Life-Changing Careers](#)

[Clinical Trials](#)

[Mayo Clinic School of Continuous Professional Development](#)



[Comments?](#)

We're interested in your feedback about this newsletter.

[Pass It On](#)

Invite a friend to subscribe.