

# Clinical Physician Update

October 2023

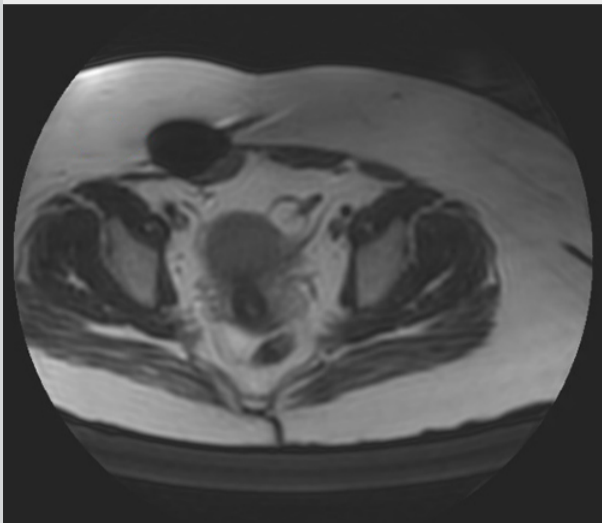
## Patient Care



### Expert answers about melanoma care plans

Tina J. Hieken, M.D., a surgical oncologist at Mayo Clinic Comprehensive Cancer Center in Rochester, Minnesota, discusses the current state of melanoma care and advancements in the field that are rapidly being translated into the clinic.

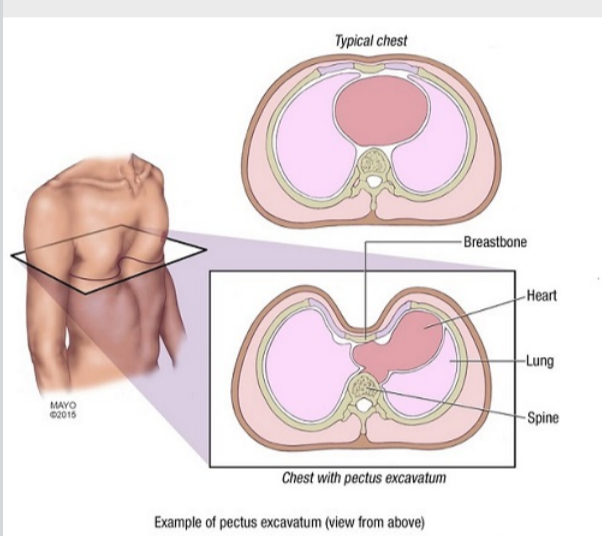
[Learn more](#)



### Mayo Clinic investigators find cryoablation useful for abdominal wall endometriosis

A multidisciplinary research team at Mayo Clinic found that cryoablation has multiple advantages for patients with abdominal wall endometriosis compared with surgery.

[Learn more](#)



### Managing pain after pectus excavatum surgery

Mayo Clinic Children's Center uses a multidisciplinary approach to manage pain after pectus excavatum surgery, typically leading to decreased use of pain medications, improved pain scores and shorter hospital stays.

[Learn more](#)

## Refer a Patient

Visit the [Medical Professional Video Center](#) to view specialty videos and Grand Rounds presentations

## Research

See all [Family Medicine](#) and [General Internal Medicine Clinical Trials](#) at Mayo Clinic

## Education

Mayo Clinic School of Continuous Professional Development offers [live courses](#), [livestreaming courses](#), [online continuing medical education \(CME\) courses](#) and [podcasts](#) to meet your CME needs.

See all [Family Medicine](#) and [Internal Medicine](#) and [Subspecialties Continuing Medical Education courses](#)



### Mayo Clinic Radiation Oncology: Current Practice and Future Direction 2024

Jan. 8-12, 2024  
Fairmont Kea Lani, Maui, Hawaii

This course explores contemporary cancer treatment through a balanced and multidisciplinary approach. The format incorporates didactic lectures, panel discussions and poster sessions to provide an engaging and informative learning experience.

[Register Now](#)



### Integrated Behavioral Health in Primary Care 2024 — Approaches that Work

Jan. 19-20, 2024  
Phoenix and Livestream

The 2024 Integrated Behavioral Health (IBH) conference focuses on two themes: basics of developing and running an integrated behavioral health program and low-intensity, high-impact interventions in primary care.

[Register Now](#)

## Consults and Referrals

Phoenix/Scottsdale, Arizona  
866-629-6362

Jacksonville, Florida  
800-634-1417

Rochester, Minnesota  
800-533-1564

[Online Referrals](#)

## Resources

[Life-Changing Careers](#)

[Clinical Trials](#)

[Mayo Clinic School of Continuous Professional Development](#)



[Comments?](#)

We're interested in your feedback about this newsletter.

[Pass It On](#)

Invite a friend to subscribe.