

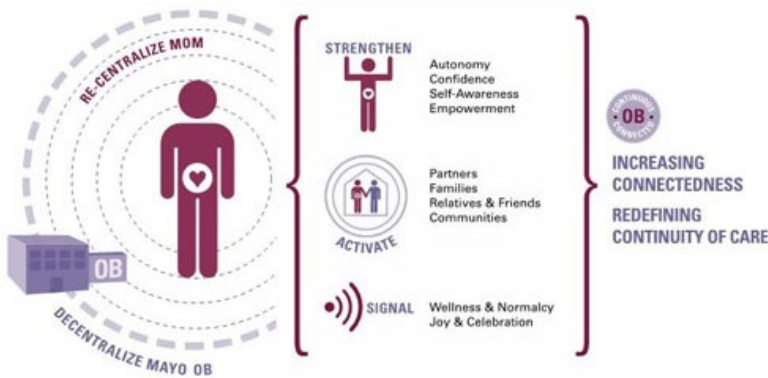


# Clinical Physician Update

May 2022

## Patient Care

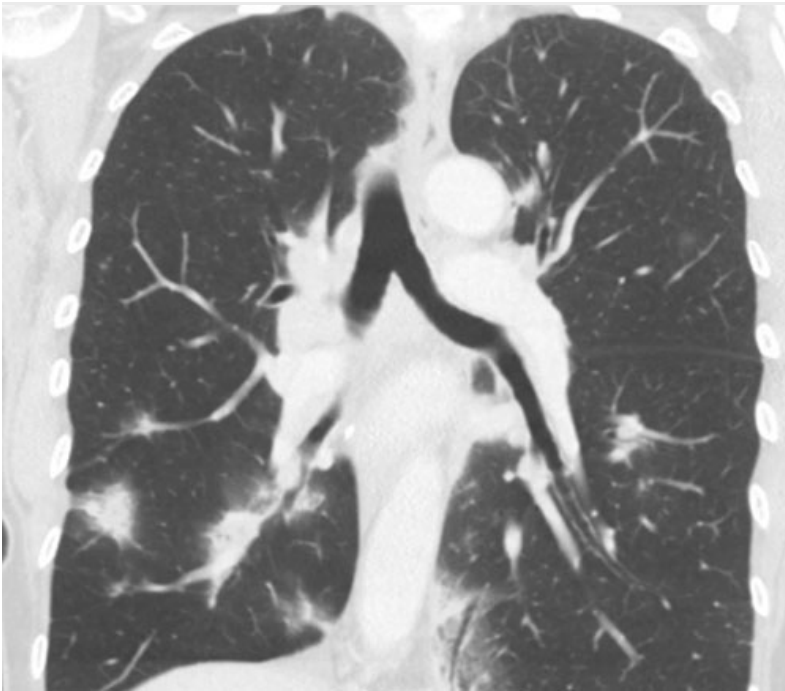
Shifting a clinic's culture from 'sick care' to wellness care



### OB Nest provides a more home-based model of care for low-risk pregnancies

A Mayo Clinic obstetrician explains a novel program for women with low-risk pregnancies that includes self-monitoring and 40% to 50% of prenatal visits from the patient's home.

[Learn more](#)



## **Toxicity clinic to address adverse reactions to cancer treatments involving the lung**

Mayo Clinic Pulmonary and Critical Care Medicine is establishing a pulmonary oncologic toxicity clinic to care for patients with lung toxicity from chemotherapy, radiation and immunotherapy.

[Learn more](#)

[Visit the Medical Professional Video Center to view specialty videos and Grand Rounds presentations](#)

## Research



## **Lack of sleep increases belly fat accumulation**

A Mayo Clinic study found that lack of sufficient sleep led to a 9% increase in total abdominal fat area and an 11% increase in abdominal visceral fat, compared to control sleep.

[Learn more](#)

See all [Family Medicine](#) and [General Internal Medicine](#) Clinical Trials at Mayo Clinic

# Education

Mayo Clinic School of Continuous Professional Development offers [live courses](#), [livestreaming courses](#), [online continuing medical education \(CME\) courses](#) and [podcasts](#) to meet your CME needs. Medical education from Mayo Clinic experts is also available through [GIBLIB](#), a new on-demand medical education library.

See all [Family Medicine](#) and [Internal Medicine and Subspecialties](#) Continuing Medical Education courses



## **A Systematic Approach to Medically Unexplained Symptoms 2022**

Aug. 17-20, 2022

Half Moon Bay, Calif., and Livestream

This program offers a diagnostic framework and template for medically unexplained conditions with shared etiologies and presentations. More specific management strategies are provided for each condition, along with various clinical pearls.

[Register Now](#)



## **An Overview of Perioperative Medicine 2022: From Outpatient Preoperative Assessment to Inpatient Postoperative Care**

Oct. 26-29, 2022

Palm Desert, Calif.

This course is designed for clinicians who see perioperative patients. It focuses on the practical, clinical side of preoperative assessment and postoperative management.

[Register Now](#)

# COVID-19 Updates and Resources

[Read more](#)

## Consults and Referrals

### Phoenix/Scottsdale, Arizona

844-255-4442

### Jacksonville, Florida

855-691-1265

### Rochester, Minnesota

888-380-4055

### [Online Referrals](#)

## Resources

[Life-Changing Careers](#)

[Clinical Trials](#)

[Mayo Clinic School of Continuous Professional Development](#)



### Comments?

We're interested in your feedback about this newsletter.

### Pass It On

Invite a friend to subscribe.

[MayoClinic.org](#) | [Newsletter Archive](#) | [Contact](#) | [Medical Professionals](#)

---