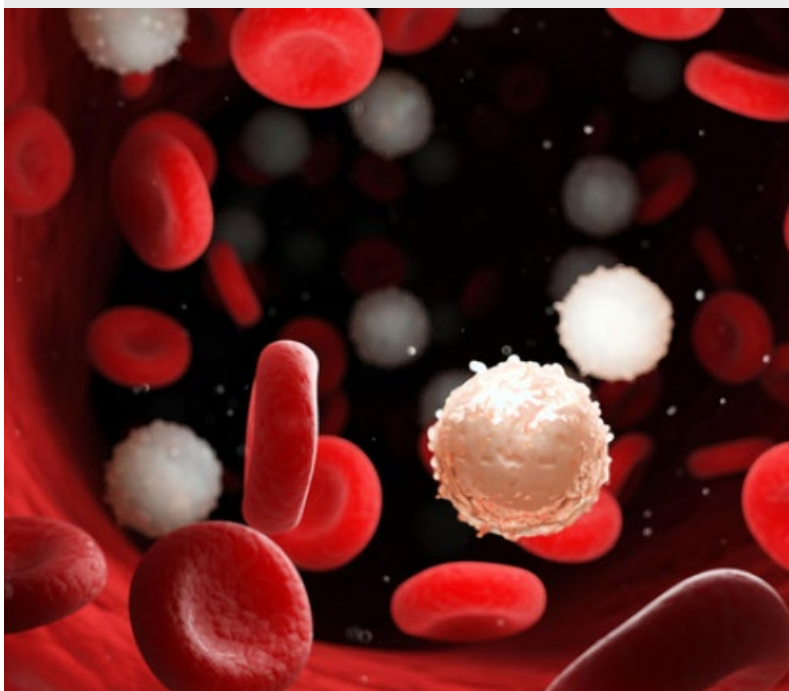




# Clinical Physician Update

December 2021

## Patient Care



### **Unique testing and care options help lessen anxiety for patients with chronic lymphocytic leukemia**

Mayo Clinic offers patients diagnosed with chronic lymphocytic leukemia nonstandard, specialized testing — tools to help them understand their prognoses and alleviate anxiety.

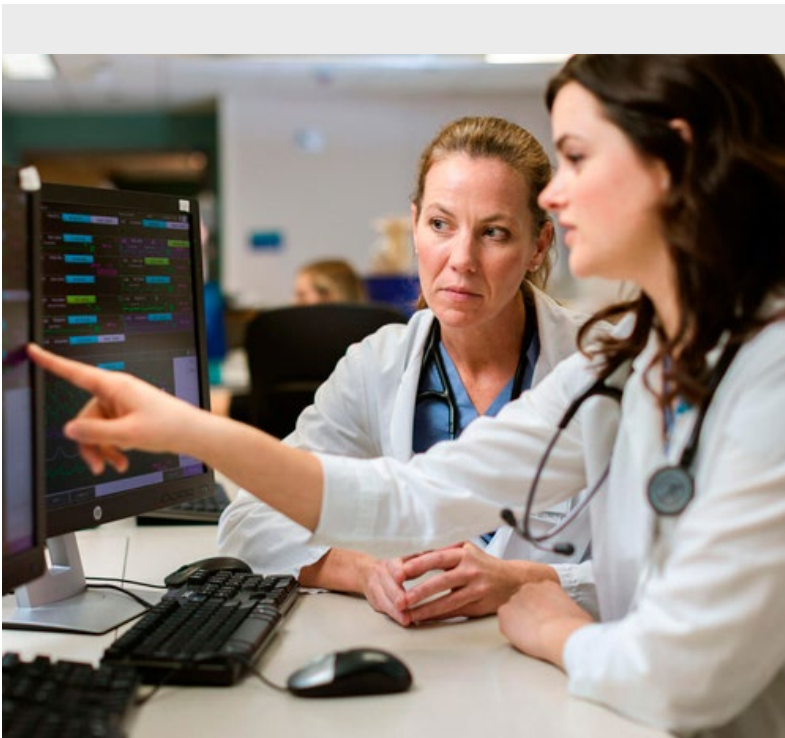
[Learn more](#)



## **Useful tools help clinicians identify and treat maladaptive eating behaviors**

Gastroenterologist Brian E. Lacy, M.D., Ph.D., outlines the symptoms, physical examination findings and diagnostic clues associated with four common subtypes of eating disorders.

[Learn more](#)



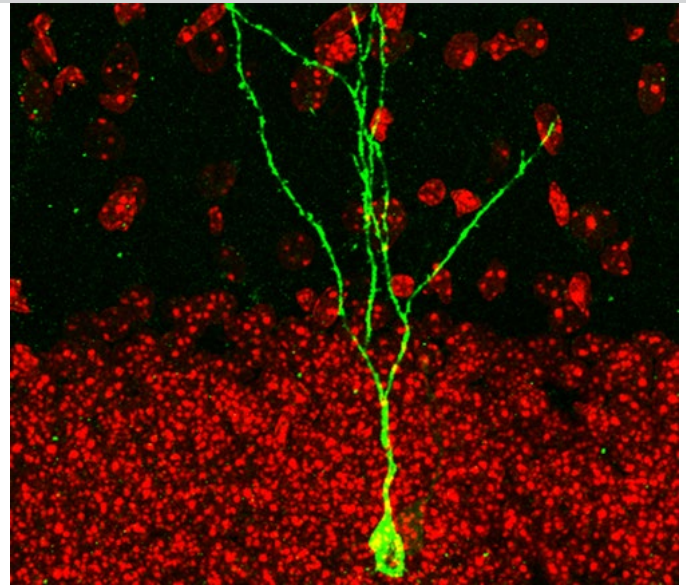
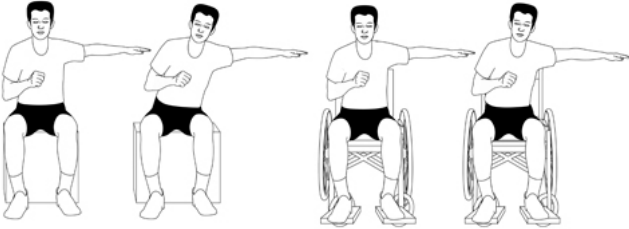
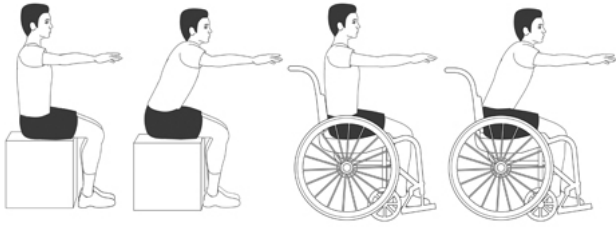
## **Easily make referrals to Mayo Clinic or access your patients' medical records**

Enroll in Mayo Clinic CareLink referring physician portal to make a referral and access your patients' medical records 24/7. CareLink may be accessed on desktop and tablet browsers.

[Enroll now](#)

[Visit the Medical Professional Video Center to view specialty videos and Grand Rounds presentations](#)

Research



### **Epidural spinal electrical stimulation improves seated reaching ability in 2 patients with spinal cord injury**

Researchers studied how electrical stimulation affects seated reaching ability and compared outcomes produced by different active electrode configurations along the lumbosacral spinal segments.

[Learn more](#)

### **Mayo Clinic laboratory research sheds light on chemo brain's underlying pathology**

Mice pre-treated with nicotinamide mononucleotide before cisplatin therapy performed better on subsequent learning and memory tests than did mice that weren't pre-treated.

[Learn more](#)

See all [Family Medicine](#) and [General Internal Medicine](#) Clinical Trials at Mayo Clinic

## Education

Mayo Clinic School of Continuous Professional Development offers [live courses](#), [livestreaming courses](#), [online continuing medical education \(CME\) courses](#) and [podcasts](#) to meet your CME needs. Medical education from Mayo Clinic experts is also available through [GIBLIB](#), a new on-demand medical education library.

See all [Family Medicine](#) and [Internal Medicine and Subspecialties](#) Continuing Medical Education courses



## **Updates in Family Medicine 2022 March 10-12, 2022 Palm Desert, Calif., and Livestream**

This Mayo Clinic and Kaiser Permanente collaboration offers a comprehensive family medicine update course. Focus highlights the latest recommendations involving medical specialties important to the primary care setting that can be applied immediately into practice.

**Register Now**

## **COVID-19 updates & resources**

[Read more](#)

## **Consults and Referrals**

### **Phoenix/Scottsdale, Arizona**

844-255-4442

### **Jacksonville, Florida**

855-691-1265

### **Rochester, Minnesota**

888-380-4055

### **Online Referrals**

## **Resources**

[Life-Changing Careers: Physicians & Scientists](#)

[Clinical Trials](#)



---

[Comments?](#)

We're interested in your feedback about this newsletter.

[Pass It On!](#)

Invite a friend to subscribe.