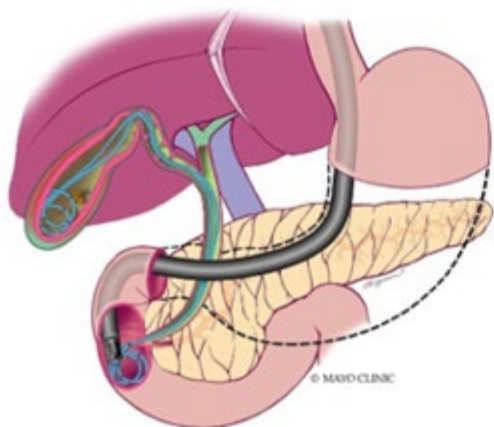


September 2021



**ERGD: A minimally  
invasive treatment  
for acute cholecystitis**



## Patient Care

[Weight-loss pharmacotherapy is feasible for many patients with cirrhosis and in liver transplant recipients](#)

More data is needed to establish the safety and efficacy of these agents in the pretransplant and post-transplant settings.

[Easily make referrals to Mayo Clinic or access your patients' medical records](#)

Enroll in Mayo Clinic CareLink referring physician portal to make a referral and access your patients' medical records 24/7. CareLink may be accessed on desktop and tablet browsers.

[See more Digestive Diseases news](#)

[View Digestive Diseases specialty videos and Grand Rounds presentations](#)



## Research

[Researchers evaluate endoscopic therapy for cholecystitis in patients ineligible for cholecystectomy](#)

When performed using a double-pigtail stent, endoscopic retrograde cholangiopancreatography-guided transpapillary gallbladder drainage (ERGD) can help maintain biliary anatomy and provide durable drainage.

## [Research findings shed light on use of biologics for treatment of esophageal Crohn's disease](#)

Mayo Clinic researchers describe the clinical features and response to biologic treatment in patients with esophageal Crohn's disease, a rare Crohn's disease phenotype.

## [1 in 5 patients diagnosed with campylobacter infection may develop PI-IBS](#)

Using Minnesota Department of Health surveillance data, researchers confirmed that 1 in 5 patients diagnosed with campylobacter infection may develop post-infection irritable bowel syndrome (PI-IBS).

[See all Gastroenterology and Hepatology Clinical Trials at Mayo Clinic](#)



## Education

Mayo Clinic School of Continuous Professional Development offers [live courses](#), [livestreaming courses](#), [online continuing medical education \(CME\) courses](#) and [podcasts](#) to meet your CME needs.

Medical education from Mayo Clinic experts is also available through [GIBLIB](#), a new on-demand medical education library. GIBLIB provides a free seven-day trial and a 25% discount on premium annual subscriptions including unlimited CME for Mayo Clinic learners. Simply enter code **MAYOCPD2021** to access this offer.

## [Mayo Clinic Women in Gastroenterology & Hepatology Showcase: If you cannot see it, you cannot be it! — LIVESTREAM](#)

Oct. 2, 2021

A nationally and internationally recognized all-women faculty covers multiple topics in gastroenterology and hepatology, including clinical care, education, research and professional development.

## [Mayo Clinic Hepato-Pancreatico-Biliary Cancer Symposium 2021](#)

Nov. 12-13, 2021, in Las Vegas

This program addresses the latest treatment options for patients with hepato-pancreatico-biliary cancers, with an emphasis on early diagnosis and treatment considerations, including surgery, radiation, loco-regional approaches and systemic therapies.

## [9th Annual Mayo Clinic Esophageal Diseases Course 2021](#)

Dec. 3-4, 2021, in Phoenix

This course explores advances in diagnosis, therapy and identification of new diseases, including high-resolution manometry and impedance monitoring, and endoscopic detection and treatment of Barrett's esophagus.

## [Mayo Clinic Gastroenterology & Hepatology 2022](#)

March 3-6, 2022, in Dana Point, Calif.

This course addresses new approaches to the diagnosis and management of patients with gastrointestinal and liver diseases, including general gastroenterology, inflammatory bowel disease, colorectal neoplasia, esophageal diseases, motility, nutrition, pancreaticobiliary disorders, endoscopy and hepatology.

---

## COVID-19 Updates

Find [resources for providers](#) and answers to questions on [referrals and testing](#) on the Medical Professionals Resource Center.

---

## Consults and Referrals

Phoenix/Scottsdale, Arizona  
844-779-5824

Jacksonville, Florida  
844-529-7563

Rochester, Minnesota  
844-561-0880

Mayo Clinic Health System  
855-392-8400

[Online Referrals](#)

## Resources

[Careers: All Physician Specialties](#)

[Clinical Trials](#)

[Mayo Clinic School of Continuous Professional Development](#)

## Connect With Us



### Comments?

We're interested in your feedback about this newsletter

### Pass It On!

Invite a friend to subscribe

### Mayo Clinic

13400 E. Shea Blvd.  
Scottsdale, AZ 85259

4500 San Pablo Road  
Jacksonville, FL 32224

200 First St. SW  
Rochester, MN 55905

