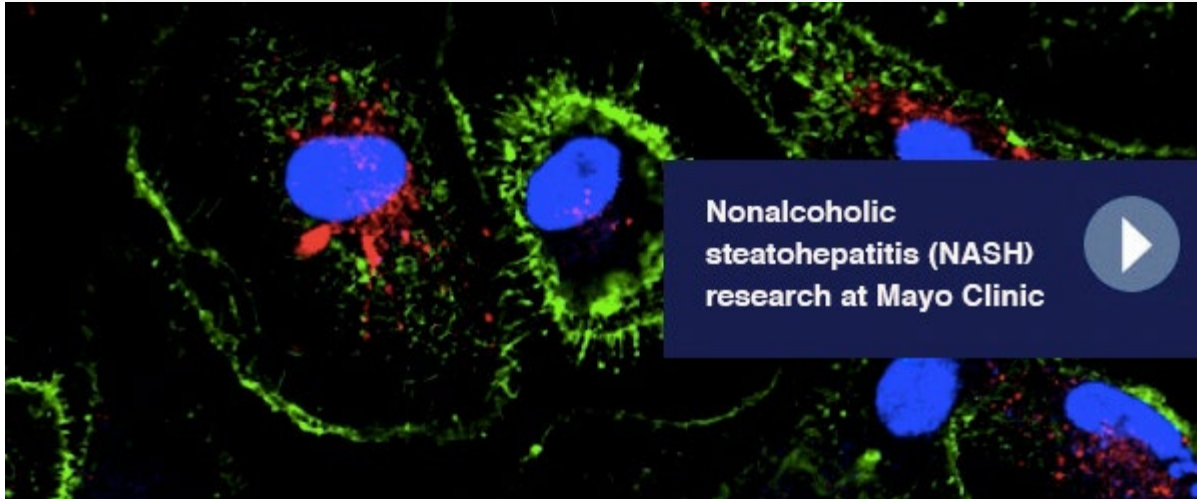


July 2021



Patient Care

[Phenotype-guided approach to obesity treatment associated with greater weight loss](#)

Actionable phenotypes of obesity based on pathophysiology and behavior can help individualize pharmacotherapy and enhance outcomes.

[New findings related to the prevalence of Barrett's esophagus in patients with scleroderma have clinical implications](#)

Study results suggest that women with scleroderma should be included in the screening recommendations for Barrett's esophagus and treated accordingly if dysplasia is found.

[See more Digestive Diseases news](#)

[View Digestive Diseases specialty videos and Grand Rounds presentations](#)



Research

[Researchers assess the performance of methylated DNA markers in blood for detection of pancreatic cancer](#)

A blood test combining methylated DNA markers with carbohydrate antigen 19-9 detects pancreatic ductal adenocarcinoma with high accuracy.

[Inherited cancer-related gene mutations present in 1 out of 8 patients with cancer](#)

The Interrogating Cancer Etiology Using Proactive Genetic Testing (INTERCEPT) study represents the largest known multicenter study of universal testing of patients with cancer.

[Nonalcoholic steatohepatitis \(NASH\) research at Mayo Clinic](#)

Harmeet Malhi, M.B.B.S., a gastroenterologist at Mayo Clinic's campus in Rochester, Minnesota, discusses current research efforts focusing on how and why the liver becomes injured in NASH.

[See all Gastroenterology and Hepatology Clinical Trials at Mayo Clinic](#)



Education

Mayo Clinic School of Continuous Professional Development offers [live courses](#), [livestreaming courses](#), [online continuing medical education \(CME\) courses](#) and [podcasts](#) to meet your CME needs.

Medical education from Mayo Clinic experts is also available through [GIBLIB](#), a new on-demand medical education library. GIBLIB provides a free seven-day trial and a 25% discount on premium annual subscriptions including unlimited CME for Mayo Clinic learners. Simply enter code **MAYOCPD2021** to access this offer.

[Gastroenterology & Hepatology Board Review 2021 — LIVESTREAM](#)

Sept. 9-12, 2021

This course is designed for candidates preparing for certification and maintenance of certification examinations in gastroenterology and hepatology. The board review includes relevant topics such as pathology, endoscopy, radiology and nutrition.

[7th Annual Gastroenterology & Hepatology Update with Interactive Live Endoscopy — 2021 \(Live and Livestream\)](#)

Oct. 1-2, 2021, in Phoenix

This course provides the latest information on the diagnosis and management of common disorders seen in gastroenterology and hepatology clinical practice. It includes a live, interactive endoscopy session.

[Integrating Care in Hepatology and Liver Transplantation Today and Tomorrow 2021](#)

Oct. 1-2, 2021, in Orlando, Fla.

This course provides updates about the diagnosis and management of patients with liver diseases, including current and emerging medical therapies and how to integrate this information into clinical practice.

[Mayo Clinic Women in Gastroenterology & Hepatology Showcase: If you cannot see it, you cannot be it! LIVESTREAM](#)

Oct. 2, 2021

A nationally and internationally recognized all-women faculty covers multiple topics in gastroenterology and hepatology, including clinical care, education, research and professional development.

COVID-19 Updates

Find [resources for providers](#) and answers to questions on [referrals and testing](#) on the Medical Professionals Resource Center.

Consults and Referrals

Phoenix/Scottsdale, Arizona
844-779-5824

Jacksonville, Florida
844-529-7563

Rochester, Minnesota
844-561-0880

Mayo Clinic Health System
855-392-8400

[Online Referrals](#)

Resources

[Careers: All Physician Specialties](#)

[Clinical Trials](#)

[Mayo Clinic School of Continuous Professional Development](#)

Connect With Us



Comments?

We're interested in your feedback about this newsletter

Pass It On!

Invite a friend to subscribe

Mayo Clinic

13400 E. Shea Blvd.
Scottsdale, AZ 85259

4500 San Pablo Road
Jacksonville, FL 32224

200 First St. SW
Rochester, MN 55905



[MayoClinic.org](#) | [Newsletter Archive](#) | [Contact](#) | [Medical Professionals](#)