

OBSTETRICS AND GYNECOLOGY

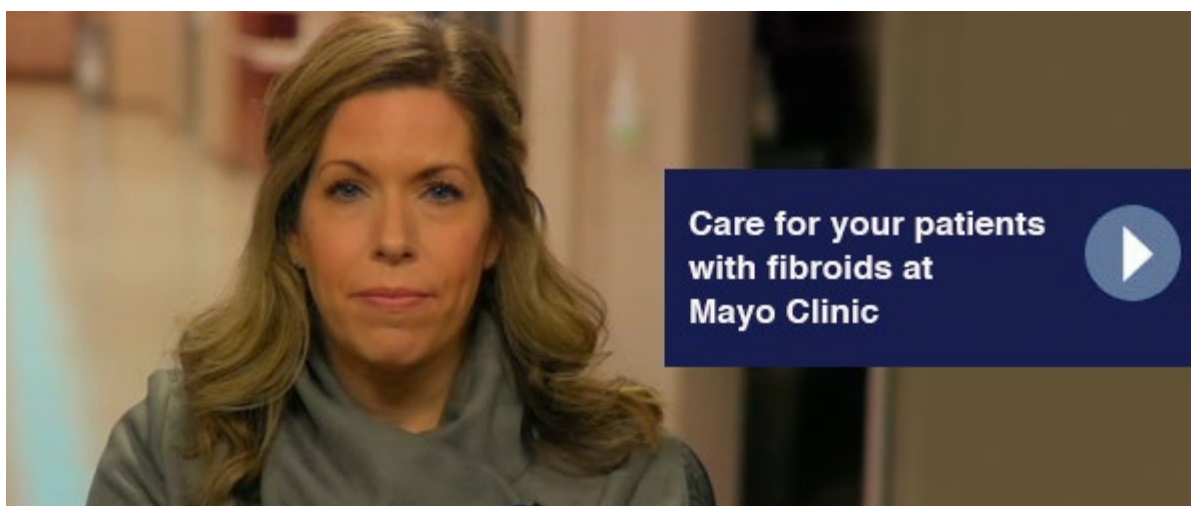
PHYSICIAN UPDATE E-EDITION



June 2020

Mayo Clinic's highest priority is patient and staff safety. We are taking every precaution to safely care for patients during their visit. Mayo Clinic has a long-standing history of helping our community in crisis while maintaining capacity to care for patients who need it most. We continue to evaluate the circumstances at each of our sites and follow federal and state mandates to protect the safety of our patients, staff and communities.

Find [resources for providers](#) and answers to questions on [referrals and testing](#) for COVID-19 on the Medical Professionals Resource Center.



Patient Care

[Fetal surgery safely promotes lung growth](#)

Mayo Clinic multidisciplinary teams employ fetal endoscopic tracheal occlusion to promote lung growth in utero. The early intervention helps manage severe congenital diaphragmatic hernia successfully.

[Emotional support is crucial for patients in need of pelvic exenteration](#)

Pelvic exenteration is used to treat cancer in the pelvic organs that has recurred after other treatment. Providers' empathy and understanding is vital to successful patient-centered care.

[Extra pre-pregnancy care components important for patients with diabetes](#)

Aoife M. Egan, M.B., B.Ch., Ph.D., and Adrian Vella, M.D., discuss the care program for a patient with type 1 diabetes mellitus who wished to become pregnant.

[Sustainable, cost-effective staffing model addresses obstetrician shortage](#)

In an innovative team care model that's won high marks from patients, certified nurse-midwives provide obstetric care for patients who are at low to moderate risk of complications.

[COVID-19 Navigator](#)

Mayo Clinic has elected to make publicly available COVID-19 content we offer through AskMayoExpert to guide our practice activities including check-in screening tools, evaluating for COVID-19, personal protective equipment (PPE) resources, management of patients with COVID-19 and operational resources.



Research

[COVID-19 convalescent plasma expanded access program](#)

Information physicians need to participate or enroll patients in the treatment study.

[HIPEC shows promise for treatment of ovarian, fallopian tube and primary peritoneal carcinomas](#)

Hyperthermic intraperitoneal chemotherapy (HIPEC) has been shown to decrease the risk of recurrence and improve the survival of patients with peritoneal-based malignancies, with minimal side effects.

[Microbiome signature associated with endometrial cancer identified](#)

Researchers have verified the main known risk factors for endometrial cancer (postmenopausal status and obesity) and identified high vaginal pH as an additional factor associated with patients with endometrial cancer.

[Regenerative solution addresses life-limiting complications of mesh-based surgical repairs for stress urinary incontinence, pelvic organ prolapse in women](#)

Researchers are testing a regenerative approach to restoring form and function without additional corrective surgery in the setting of vaginal mesh exposure.

[See all Obstetrics and Gynecology Clinical Trials at Mayo Clinic](#)



Education

Mayo Clinic School of Continuous Professional Development offers [online CME courses](#) and [podcasts](#) to help meet your CME needs during the COVID-19 pandemic.

Medical education from Mayo Clinic experts is also available through [GIBLIB](#), a new on-demand medical education library. GIBLIB's extensive offerings include full-capture surgical video with live narration by Mayo Clinic surgeons, lectures by industry leaders, and GIBLIB originals featuring timely discussions on trending topics in medicine.

[Women's Health Update — Online](#)

Gain comprehensive insight into common health concerns for the female population across issues such as cardiovascular and pulmonary health, breast health, menopause and gynecology, neurology, endocrinology, and dermatology.

[See all Obstetrics, Gynecology & Women's Health Continuous Professional Development courses](#)



In the Video Center

[Clinical trial regarding endometrial cancer and stress urinary incontinence](#)

Gynecologic oncologist Gretchen E. Glaser, M.D., discusses a study that explores the quality of life and clinical outcomes among women with endometrial cancer and stress urinary incontinence who have concurrent surgery.

[View Obstetrics and Gynecology specialty and Grand Rounds presentations](#)

Consults and Referrals

Phoenix/Scottsdale, Arizona

866-629-6362 (toll-free)

Jacksonville, Florida

800-634-1417 (toll-free)

Rochester, Minnesota

800-533-1564 (toll-free)

[Online Referrals](#)

Resources

[Careers: All Physician Specialties](#)

[Clinical Trials](#)

[Mayo Clinic School of Continuous Professional Development](#)

Connect With Us



Comments?

We're interested in your feedback about this newsletter.

Pass It On!

Invite a friend to subscribe.

Mayo Clinic

13400 E. Shea Blvd.
Scottsdale, AZ 85259

4500 San Pablo Road
Jacksonville, FL 32224

200 First St. SW
Rochester, MN 55905



