

## November 2009

### Grand Rounds Online

New topics

"Abdominal Aortic Aneurysms: an Integrated Approach to Evaluation and Management"

"Nerve Signal Blocking as an Alternative to Bariatric Surgery"

[Watch Grand Rounds](#)

### Clinical Trials

[Clinical Trials Open to Patient Recruitment](#)

### Refer a Patient

[Arizona Referrals](#)

866-629-6362 (toll-free)

[Florida Referrals](#)

800-634-1417 (toll-free)

[Minnesota Referrals](#)

800-533-1564 (toll-free)

[Online Referrals](#)

### Comments?

We're interested in your [feedback](#) about this newsletter.

### Pass It On

Invite a friend to [subscribe](#) by forwarding this newsletter.

## Patient Care

### Adult Eosinophilic Esophagitis: More Common and Treatable with Corticosteroids

The prevalence of adult eosinophilic esophagitis (EoE) has increased over the past decade to an annual incidence similar to that of Crohn disease. Mayo Clinic specialists have developed several novel topical corticosteroid therapies that manage EoE symptoms safely and effectively.

[Learn more.](#)

### Glucocorticoid-Induced Diabetes Mellitus

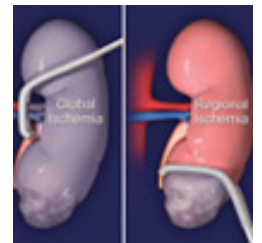
The main goal of therapy for hyperglycemia induced by glucocorticoids is to prevent acute hyperglycemic complications. This article outlines Mayo Clinic's general approach to treatment of patients with glucocorticoid-induced hyperglycemia.

[Learn more.](#)

### Nephron-Sparing Surgery for Small Renal Masses

Nephron-sparing surgery is used in more than 80 percent of procedures to remove small renal masses at Mayo Clinic. The procedure reduces the risk of chronic renal insufficiency associated with total nephrectomy.

[Learn more.](#)



### Pain Rehabilitation Program Helps Adolescents

A three-week hospital-based outpatient program effectively treats adolescents with chronic pain. The innovative program works to restore the child's ability to function despite persistent pain and symptoms.

[Learn more.](#)

### Diagnosis and Treatment of Viral Myocarditis

Leslie Cooper, M.D., discusses new diagnostic methods, such as cardiac MRI, useful for diagnosing myocarditis.

[Learn more and view video](#) of Leslie Cooper, M.D.

## Research

### Risk Factors for Diabetic Retinopathy

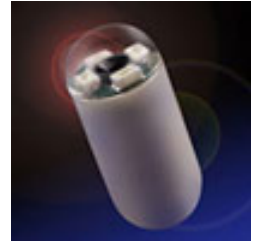
Studies looking at the major risk factors for diabetic retinopathy show a consistent association between retinopathy and duration of diabetes mellitus, degree of hyperglycemia, and presence of hypertension, hyperlipidemia, pregnancy and renal disease.

[Learn more](#) and [view videos](#) of John Pach, M.D. and Steven Smith, M.D.

### **Capsule Endoscopy Safe for Patients with Heart Devices**

Video capsule endoscopy, a procedure that uses wireless technology in diagnosing intestinal disease, is safe for patients with heart devices, report Mayo researchers.

[Learn more.](#)



### **High-Definition Colonoscopy Detects More Polyps**

High-definition colonoscopy is much more sensitive than standard colonoscopy in finding polyps that may morph into cancer, according to a Mayo Clinic study.

[Learn more.](#)

---

## **Education**

---

### **Mayo Clinic Primary Care Update: Back and Neck Pain 2010**

Jan. 21-23, 2010

Medical considerations for the adult neck, shoulder and back pain patient are covered in this three-day course. Format includes lectures, independent study options, hands-on physical examination skills lab training and case studies. Two clinical tracks offered: low back pain and neck and shoulder pain.

Location: [Disney's BoardWalk Inn](#), Lake Buena Vista, Fla.

Contact: 507-284-2608 or 507-266-0940

E-mail: [cme-jax@mayo.edu](mailto:cme-jax@mayo.edu)

[View brochure](#)

Online registration not available.

### **Selected Topics in Internal Medicine**

Jan. 25-29, 2010

Clinical pearls, mythbusters and internal medicine updates including colon cancer surveillance, bio-identical hormones, C. difficile colitis and new FDA-approved drugs are included in this postgraduate update.

Location: [Waikoloa Beach Marriott Resort & Spa](#), Waikoloa, Hawaii

Contact: 800-323-2688 (toll-free)

E-mail: [cme@mayo.edu](mailto:cme@mayo.edu)

[View brochure](#)

[Register now](#)

### **Culture and Health in Diverse Communities**

Jan. 28-29, 2010

This CME activity identifies and addresses barriers to health care delivery associated with diversity in our communities. Pre-course surveys from community members help frame discussion topics. Didactic presentations provide a common background. Breakout work sessions explore the nature and scope of barriers to optimal health care delivery and identify potential cultural humility solutions.

Location: Siebens Building, Mayo Clinic, Rochester, Minn.

Contact: 800-323-2688 (toll-free)

E-mail: [cme@mayo.edu](mailto:cme@mayo.edu)

[View brochure](#)

[Register now](#)

[See all Continuous Professional Development courses](#)

[Newsletter Archive](#) | [Contact Mayo](#)

[Subscribe](#)

13400 East Shea Blvd  
Scottsdale, AZ 85259

**Mayo Clinic**  
4500 San Pablo Road  
Jacksonville, FL 32224

200 First St. SW  
Rochester, MN 55905