

February 2009

Neurology and Neurosurgery news from Mayo Clinic.

Referring a Patient

To refer a patient or arrange a consultation:

- [Arizona Referrals](#)
(866) 629-6362
- [Florida Referrals](#)
(800) 634-1417
- [Minnesota Referrals](#)
 - [Neurology](#)
(507) 284-1588
 - [Neurosurgery](#)
(507) 284-8008
 - [Other Consults](#)
(800) 533-1564

Clinical Trials

Clinical Trials Open to Patient
Recruitment for [Brain and Nerve Disease Research](#)

Continuing Medical Education

[Neurology and Neurosurgery Course Offerings](#)

Comments?

We're interested in your [feedback](#) about this newsletter.

Pass It On**Patient Care****3-D Image Guidance to Improve Surgical Outcomes**

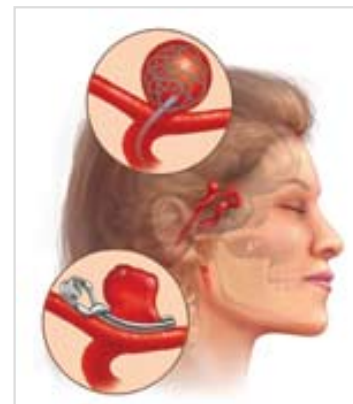
[Image guidance](#) is a real-time navigation system that continues to improve outcomes for surgical procedures involving the spine, including spinal reconstruction. A Mayo Clinic neurosurgeon demonstrated just how much image guidance can increase safety in a recent retrospective study. In 1,200 spinal screws placed using 3-D image guidance, there were no vascular, visceral, or spinal cord injuries and the incidence of injury to the nerve roots was less than 1 percent.

Expanding Applications of Deep Brain Stimulation: Cluster Headache, Tourette Syndrome, Chronic Pain

[Deep Brain stimulation](#) restores function by stimulating brain tissue. Mayo Clinic has expanded its deep brain stimulation program to include new treatment approaches and innovative research to refine and improve this treatment.

Small Unruptured Intracranial Aneurysms Clinical Trial

The Mayo Clinic-led International Study of Unruptured Intracranial Aneurysms set out to shed light on the question: [Should small unruptured intracranial aneurysms be treated?](#) Among the many findings was that size and location mattered relative to risk for rupture.



Invite a colleague to [subscribe](#) by

forwarding this newsletter.

Research

Variants in a Gene on the X Chromosome Associated with Increased Susceptibility to Alzheimer's Disease

Researchers at Mayo Clinic have discovered the first [gender-linked susceptibility gene](#) for late-onset Alzheimer's disease. The research showed that women who inherited two copies of a variant in the PCDH11X gene, found on the X chromosome, are at considerably greater risk of developing Alzheimer's disease. Women with a variant on one of their two X chromosomes also had some increase in risk, as did men with the variant on their single X chromosome, but these effects were weaker than inheriting two variants.

Early Detection of Alzheimer's Disease: How Early and by What Means?

The research frontier in treatment for Alzheimer's disease is being defined by the search for [disease-modifying therapies](#) that would alter the course of the disease by delaying its onset, slowing it down, or stopping its progression.

Discovery in Perry Syndrome Suggests Common Mechanism May Underlie Many Neurodegenerative Diseases

A Mayo Clinic-led international consortium of researchers has discovered a [genetic defect that results in profound depression and parkinsonism](#) in a disorder known as Perry syndrome. Although this syndrome is exceedingly rare, the mechanism implicated in it may help explain the origins of a variety of neurodegenerative disorders.

The Science of Healthy Aging

Mayo Clinic researchers are conducting a broad, groundbreaking, population-based [Study of Aging](#) that has produced data that provides some of the first estimates in the United States of Mild Cognitive Impairment and connections between cognitive decline and controllable conditions such as diabetes,

hypertension and heart disease.

Education

Multiple Sclerosis 2009: Update and Practical Management Strategies

March 14-15, 2009

This symposium is intended for clinicians with an interest in multiple sclerosis (MS) care. Course highlights include cutting-edge research reviews by leading investigators in MS pathology, neuroimaging, disease models, clinically-relevant laboratory research and clinical trial design.

- Location: Scottsdale Marriott at McDowell Mountains
- Contact: 480-301-4580 or mcs.cme@mayo.edu

[Brochure](#)

Clinical Autonomic Quantitation Workshop

May 16-17, 2009

This course will focus primarily on the three autonomic function tests that have CPT codes. The program will integrate three specific aims beginning with a series of lectures on the underlying physiology, patient preparation, indications for autonomic testing and factors that affect the results and Health Care Financing Administration (HCFA) requirements. There will also be a demonstration of specific autonomic function tests, including the quantitative sudomotor avon reflect test (QSART), tests of cardiovagal function (heart rate response to deep breathing and the Valsalva maneuver) and tests of the adrenergic function.

- Location: Mayo Clinic, Rochester, Minn.
- Contact: 1-800-323-2688 (toll-free) or cme@mayo.edu

[Brochure](#)

[Online Registration](#)

Neurology in Clinical Practice

July 16-18, 2009

This is a comprehensive three-day course directed at practitioners who see patients with a broad range of neurologic disorders. The course is intended to provide a review of neurology with an emphasis on case-based presentations, recent advances, and evidence-based approaches.

- Location: InterContinental, Chicago
- Contact: 1-800-462-9633 (toll-free) or cme@mayo.edu

[Brochure](#)

[See all Neurology and Neurosurgery Continuing Medical Education courses.](#)

[Newsletter Archive](#)[Subscribe](#)[Contact Mayo](#)

[Manage My Subscription](#) (including unsubscribe).

© 2009 Mayo Clinic. All rights reserved. [Terms of Use](#).

13400 East Shea Blvd
Scottsdale, AZ 85259

Mayo Clinic
4500 San Pablo Road
Jacksonville, FL 32224

200 First St. SW
Rochester, MN 55905